

# PSE on bainbridge island

*Transmission Line Routing Community Sounding Board*

## Information Meeting #1 Project Need, Solutions & Project Area

August 6, 2020



PUGET  
SOUND  
ENERGY

We'll begin at 5:30pm—all participants will be muted.  
Technical difficulties? Please call or text Darcy Edmunds, [REDACTED]



# Welcome Community Sounding Board Members



# Safety Moment

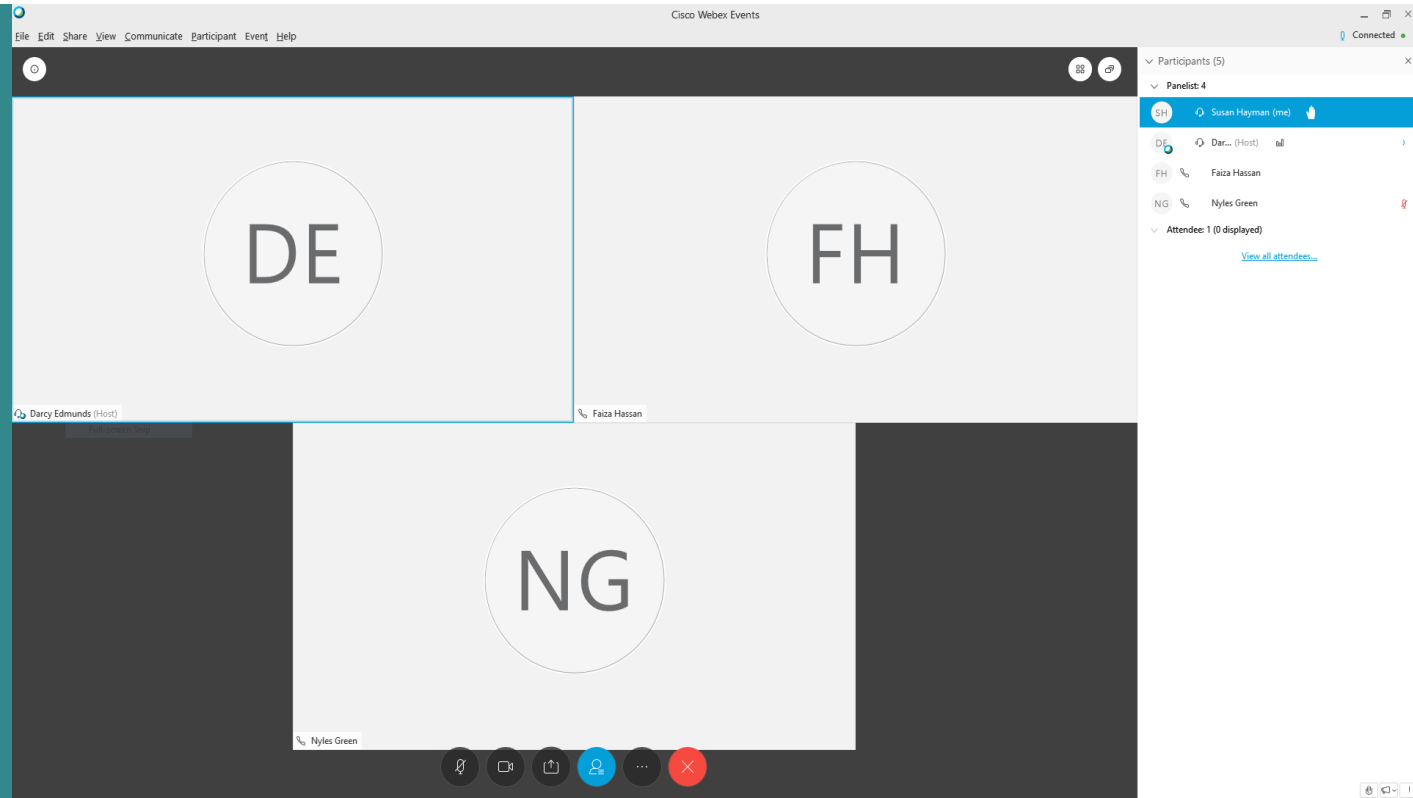
# TREAT YOUR FACE MASK LIKE UNDERWEAR



- MAKE SURE IT'S CLEAN
- MAKE SURE IT FITS SNUG BUT NOT TOO TIGHT
- MAKE SURE IT COVERS THE IMPORTANT PARTS
- DON'T TOUCH OR ADJUST IT (ESPECIALLY IN PUBLIC)
- DON'T SHARE IT
- THROW IT AWAY IF THERE ARE HOLES OR STAINS
- NOT ALWAYS REQUIRED BUT DEFINITELY ENCOURAGED

# Panelist Screen Controls

- Use the microphone icon to unmute
- Use the camera icon to manage your video
- Use the person icon to manage other settings.
- Slides appear in the main window.



The screenshot displays the Cisco Webex Events interface. The main window shows three video thumbnails for panelists: DE (Darcy Edmunds, Host), FH (Faiza Hassan), and NG (Nyles Green). The DE and FH thumbnails are in the top row, and the NG thumbnail is in the bottom row. The DE thumbnail is currently active. The participants list on the right shows the following details:

- Participants (5)
- Panelist: 4
  - ST Susan Hayman (me)
  - DE Darc... (Host) all
  - FH Faiza Hassan
  - NG Nyles Green
- Attendee: 1 (0 displayed)
  - [View all attendees...](#)

The bottom of the interface features a control bar with icons for microphone, video, chat, person, and a red 'X' icon.

# For today

Darcy Edmunds  
is our meeting host.

Please text/call  
Darcy if you have  
technical difficulties:

- Attendees are in listen-only mode.
- A brief public comment opportunity will be available at the end of the meeting.
- CSB members:
  - Listen to and appreciate the diversity of views and opinions.
  - Actively participate in the group.
  - Behave constructively and courteously towards all participants.
  - Respect the role of the facilitator to guide the group process.

# Meeting Agenda

Time	Item	Presenter(s)
5:30 p.m.	<b>Opening</b> <ul style="list-style-type: none"><li>• Welcome and safety moment</li><li>• Agenda overview</li><li>• Meeting conduct</li><li>• Introduction of Jens Nedrud</li></ul>	Renee Zimmerman, PSE Susan Hayman, Facilitator
5:40 p.m.	<b>Presentation:</b> Project need and solution Q&A, discussion	Jens Nedrud, PSE Andy Swayne, PSE
6:25 p.m.	<b>Break</b>	
6:30 p.m.	<b>Presentation:</b> Transmission Line Study area Q&A, feedback	Kirk Moughamer, HDR Project Manager
7:20 p.m.	<b>Observer comment</b>	Susan Hayman, Facilitator
7:25 p.m.	<b>Wrap up, next steps</b>	Susan Hayman, Facilitator
7:30 p.m.	<b>Adjourn</b>	

# Bainbridge Island reliability and grid modernization



Jens Nedrud, Manager, System Planning  
August 6, 2020

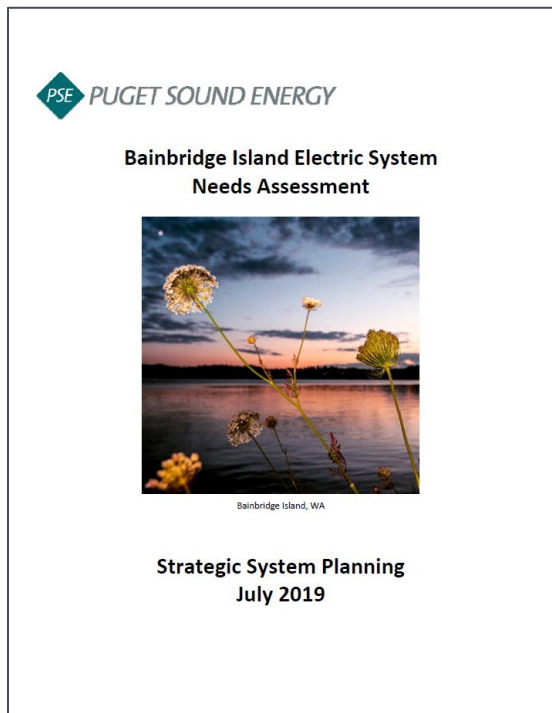


# Why are we here tonight?

---

- Electric reliability needs to be improved
- Committed to exploring new technologies
- Combines new technologies and grid infrastructure
- Partnering with the community to implement solutions

# Needs Assessment

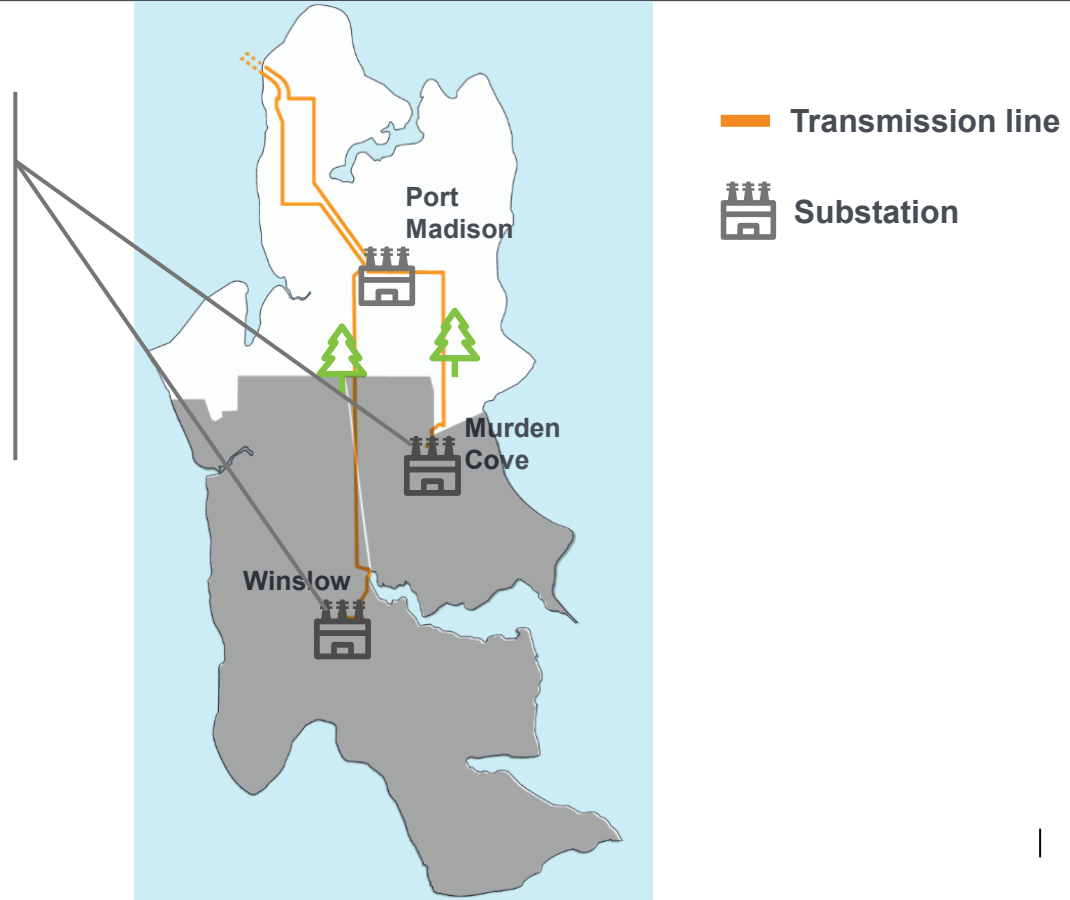


## Findings

- Poor transmission reliability
- Aging transmission infrastructure
- Growth: ferry electrification and increased demand for power

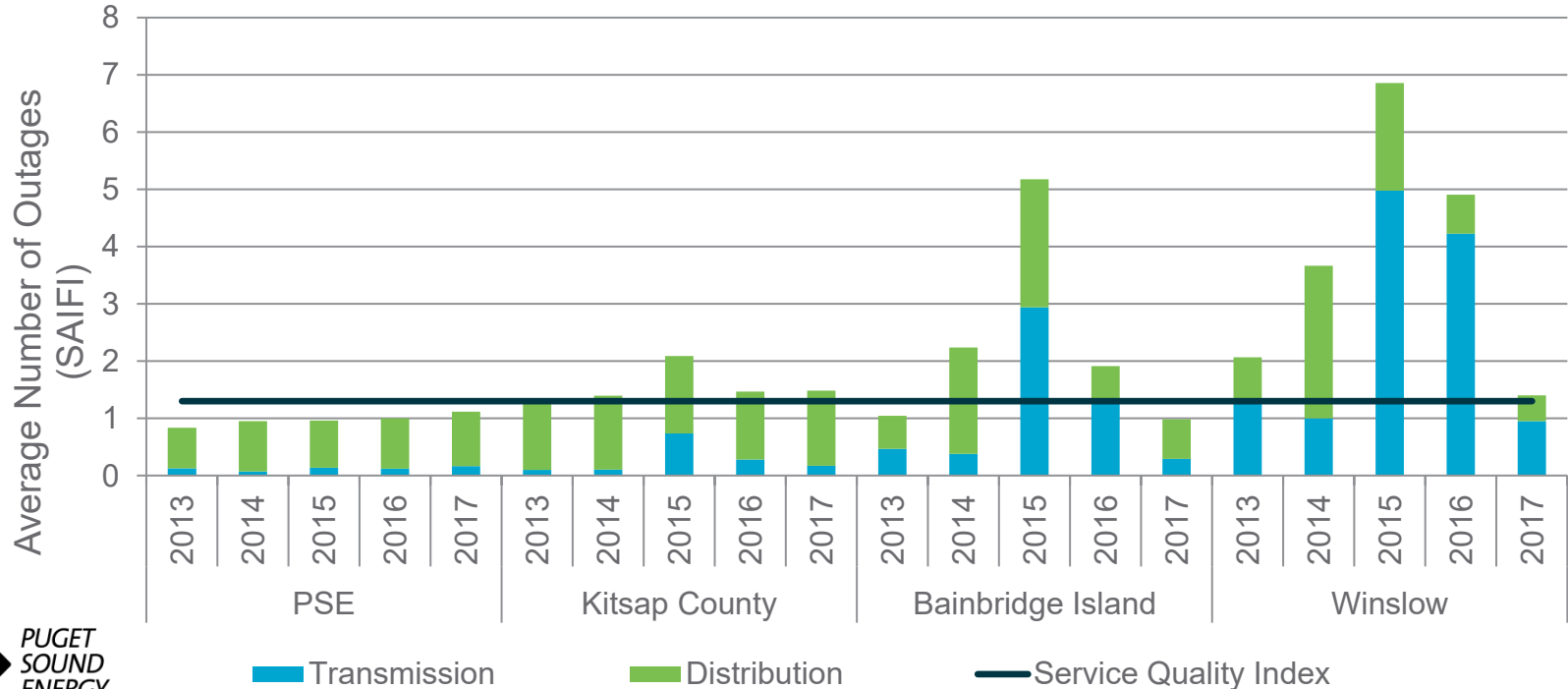
# Why do my lights go out so often?

2/3 of customers at risk of outage due to lack of back-up transmission

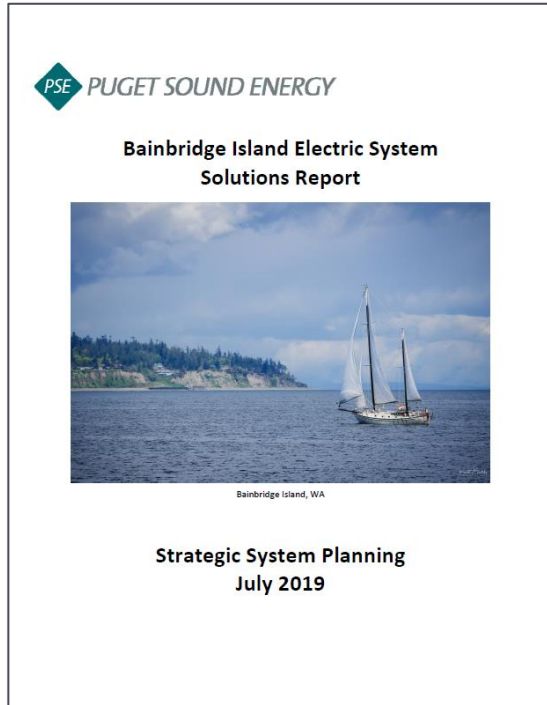


# Needs Assessment findings

## Poor transmission reliability



# Solutions Report



- 10-year planning horizon
- Analyzed traditional “wires” and non-wires alternatives
- Solution uniquely addresses Bainbridge Island’s needs

# PSE's proposed solution



**New transmission line and rebuild the aging Winslow Tap to improve reliability**

**New 3.3 MW battery energy storage system to provide additional capacity**

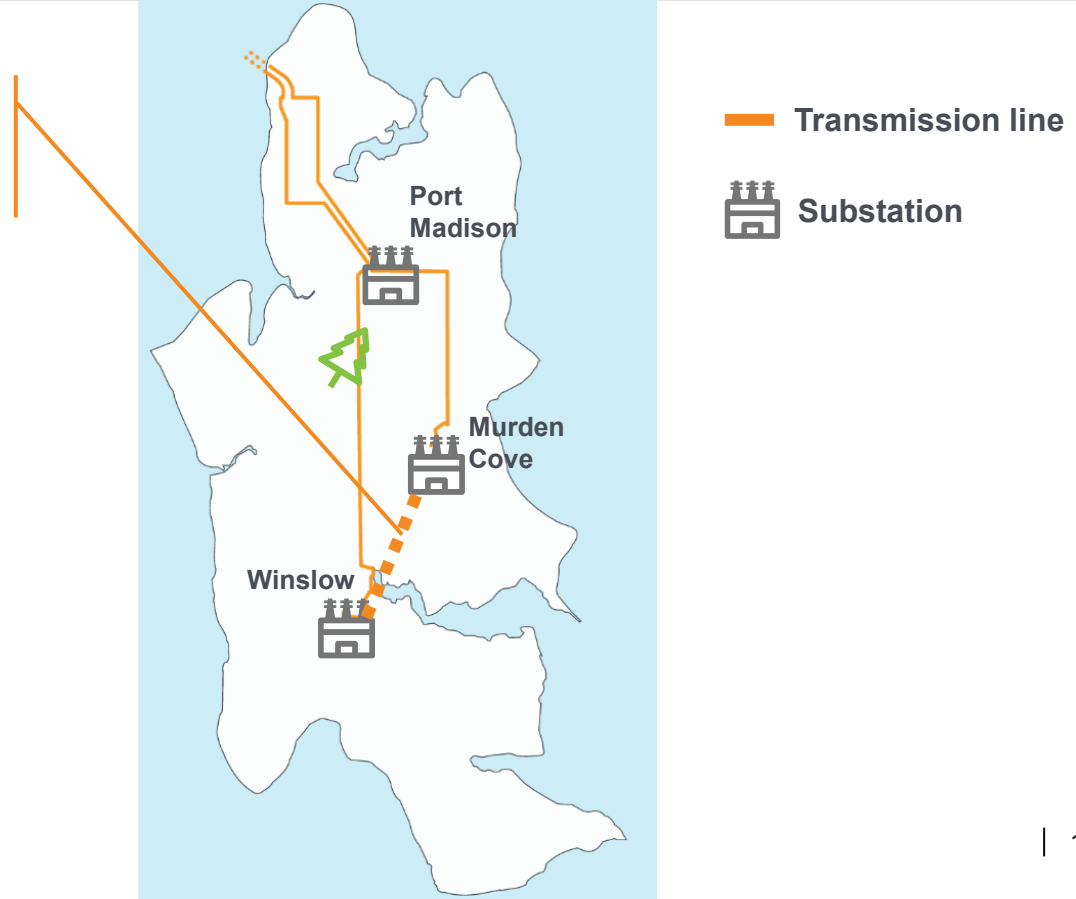
**Targeted conservation and demand response tools to reduce demand**

Reliability and resiliency

Capacity

# What would help keep the lights on?

New transmission line for improved reliability



# Questions?

---



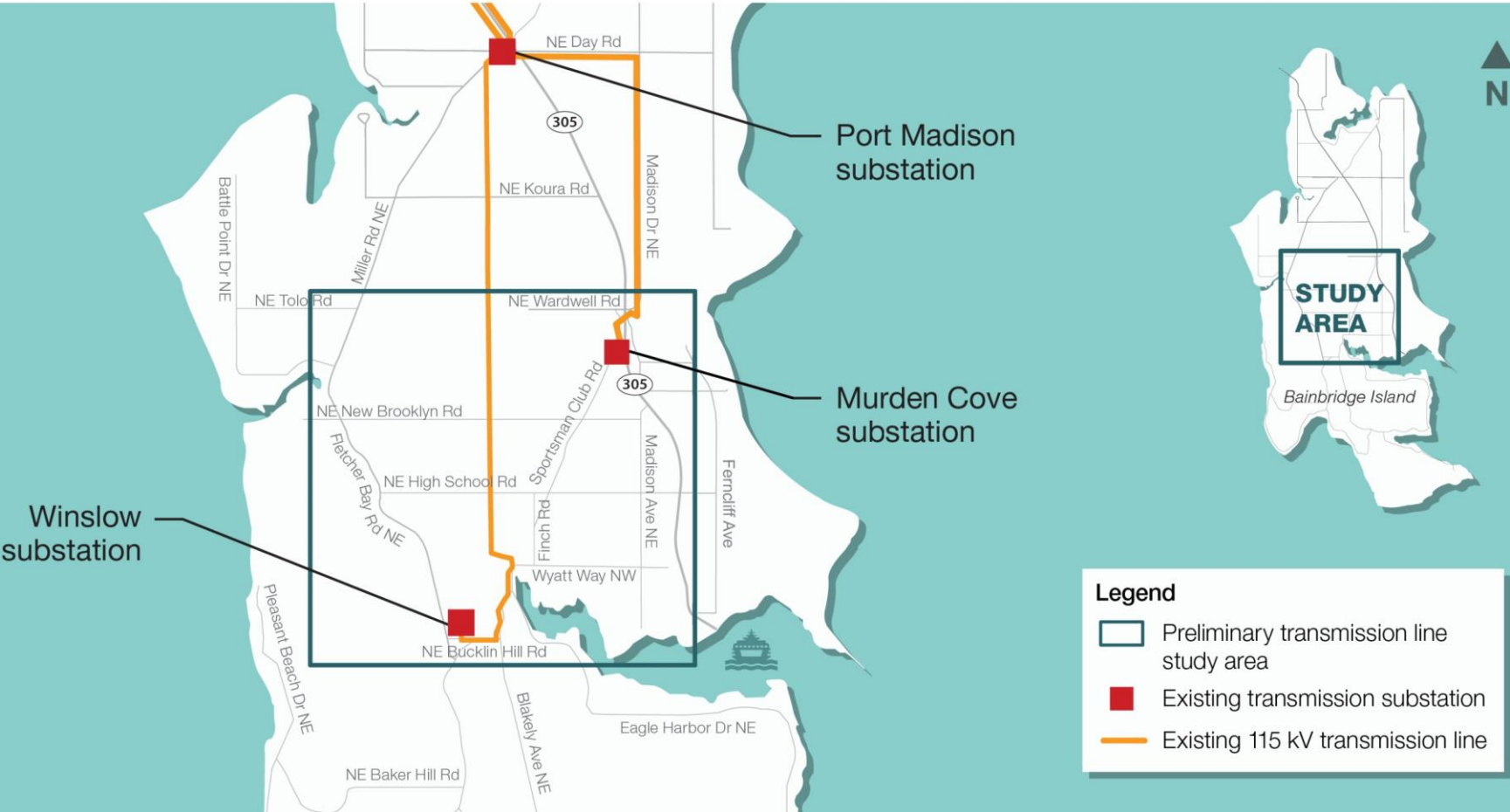


# Preliminary Transmission Line Project Study Area

---

Kirk Moughamer, HDR

# STUDY AREA



# Observer Comment

---

- CSB Information Meeting #2: EMF and Undergrounding (date TBD)
- CSB Meeting #4: September (date TBD)—Route Segments

*Remember:* Resource materials for the CSB and overall project are available on PSE's website

# Adjourn

---



# Thank you!



# Modernizing the grid

