

PSE on bainbridge island

Transmission Line Routing Community Sounding Board

Meeting 4 CSB Feedback on the Routing Criteria

October 12, 2020



We'll begin at 5pm—all participants will be muted.
Technical difficulties? Please call or text Faiza Hassan, [REDACTED]

An aerial photograph of a coastal town and harbor. The foreground shows a residential area with houses and trees. The middle ground features a harbor filled with numerous sailboats and a few larger boats. In the background, there is a large body of water and distant mountains under a clear sky.

Welcome Community Sounding Board Members



Safety Moment

Safety Moment: Emergency Preparedness Kit

Building a Safety Kit

1. Water: one gallon per person, per day
2. Food: non-perishable, easy-to-prepare items
3. Flashlight
4. Battery-powered or hand-crank radio
5. First aid kit
6. Medications (7-day supply) and medical items
7. Multi-purpose tool
8. Sanitation and personal hygiene items
9. Copies of personal documents
10. Cell phone with chargers
11. Family and emergency contact information
12. Extra cash
13. Blankets
14. Map(s) of the area

Do you have a **KIT?**



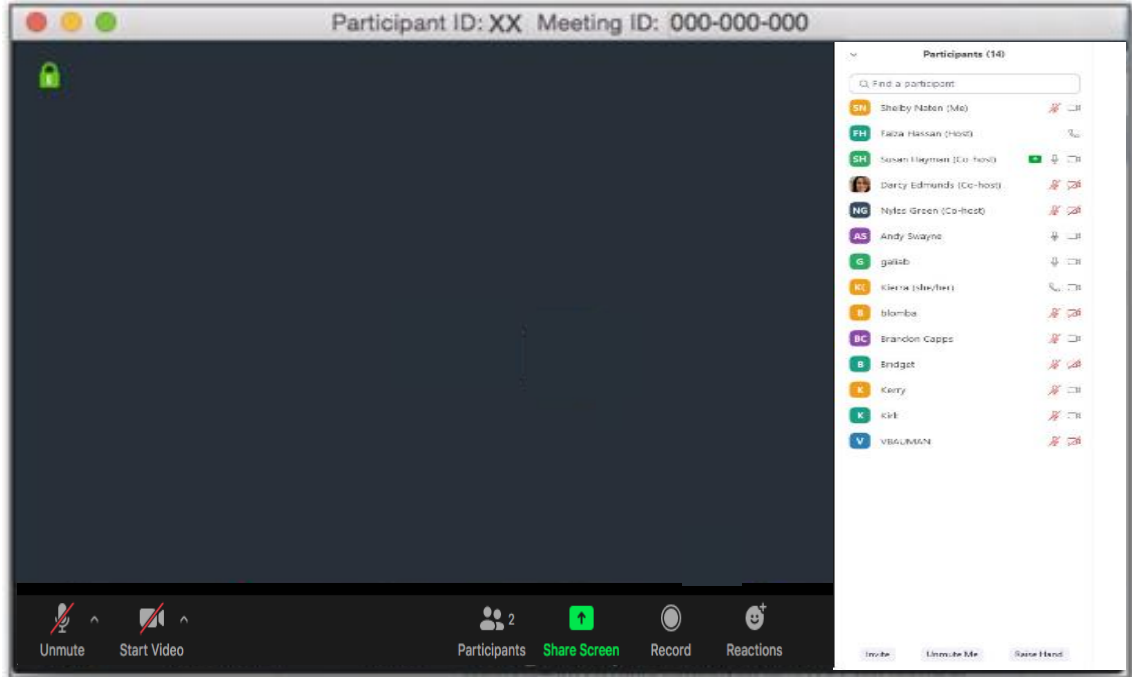
Preparedness means being equipped with the supplies you may need during an emergency or disaster.

Keep them in an emergency kit you can use at home or take with you in case of an evacuation.



Zoom Participant Review

- Raise your hand to speak--please remain on mute
- Automatically assigned to a breakout room
- Automatically moved in and out of breakout room



For today

Faiza Hassan
is our meeting host.

Please text/call
Faiza if you have
technical difficulties:

- Attendees are in listen-only mode via YouTube
- Public comments may be emailed to info@psebainbridge.com or left via voicemail at 1-888-878-8632
- CSB members:
 - Listen to and appreciate the diversity of views and opinions.
 - Actively participate in the group.
 - Behave constructively and courteously towards all participants.
 - Respect the role of the facilitator to guide the group process.

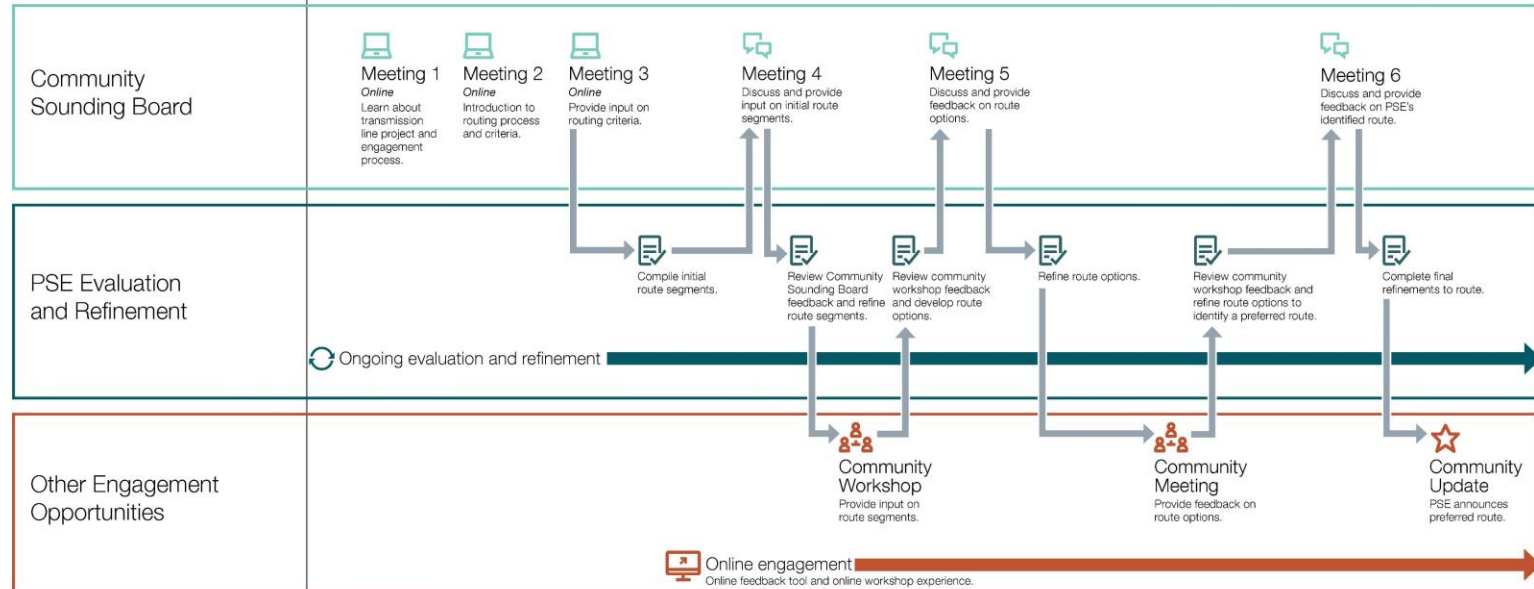
Meeting Agenda

Time	Item	Presenter(s)
5:00 p.m.	Opening <ul style="list-style-type: none">• Welcome and safety moment• Zoom orientation• Agenda overview• Meeting conduct• CSB member introductions	Kierra Phifer, PSE Susan Hayman, Facilitator
5:20 p.m.	Presentation: Study area and Route Segments	Andy Swayne, PSE Kirk Moughamer, HDR
5:40 p.m.	Small group discussion	Breakout group facilitators
6:30 p.m.	Break	
6:35 p.m.	Report-out by small groups	Susan Hayman, Facilitator
7:20 p.m.	Wrap up, next steps	Susan Hayman, Facilitator
7:30 p.m.	Adjourn	

PSE on bainbridge island

Transmission Line Routing Community Engagement Process

2020-2021



NOTE: Schedule and format are subject to change

Updated May 2020

Study area and Route Segments Overview

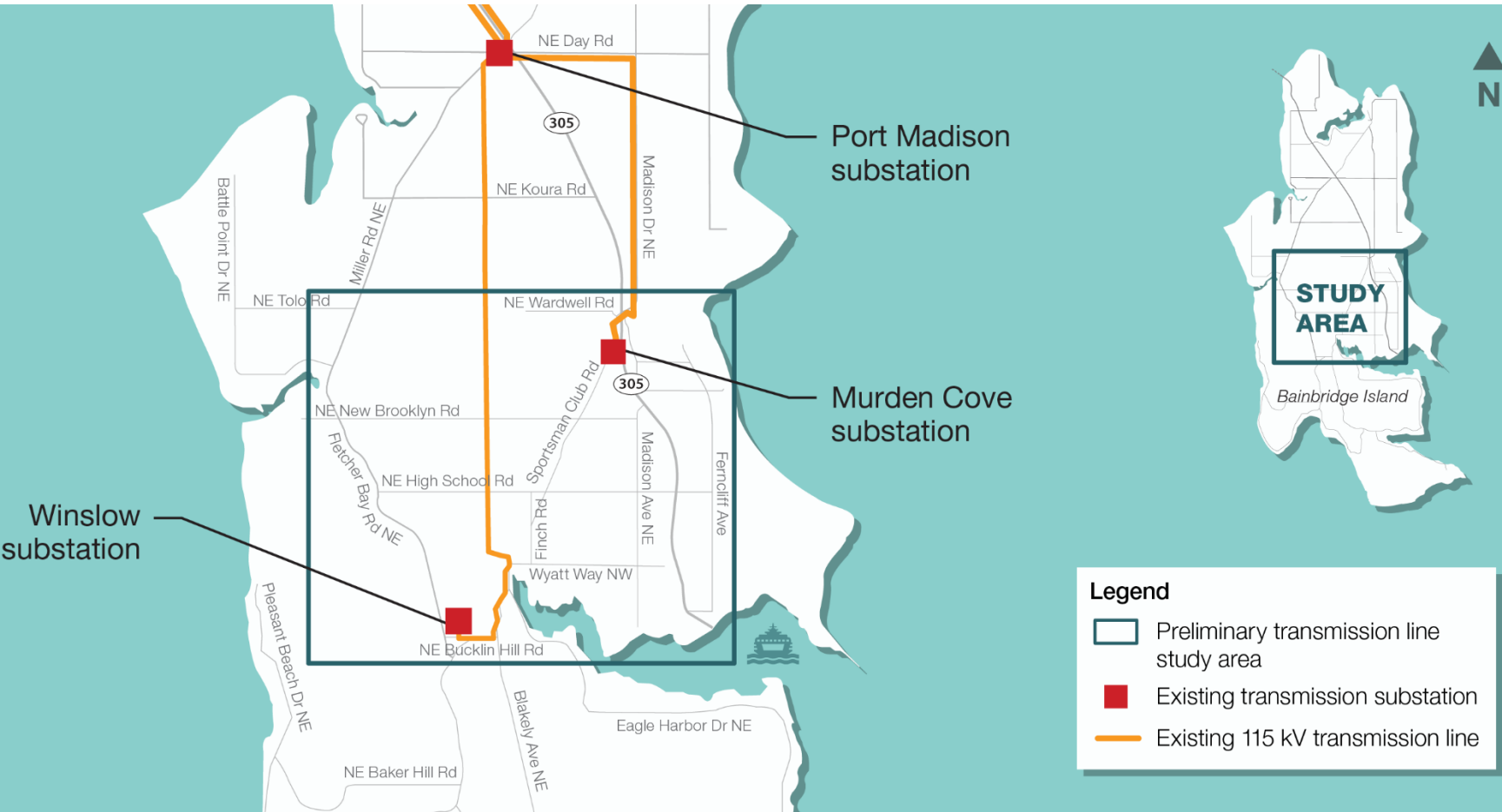
Andy Swayne, PSE

Kirk Moughammer, HDR

FINDING BALANCE DURING THE ROUTING PROCESS



STUDY AREA



KEY TERMS

ROUTE SEGMENT

A discrete section of a potential future transmission line. Route Segments will follow existing road rights-of-way and generally travel in the direction of the designated terminal points.

ROUTE OPTION

A pathway between two identified terminal points that links together Route Segments.

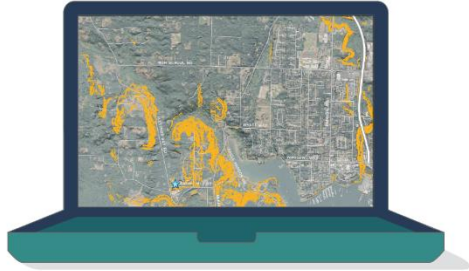
CRITERIA

A set of factors by which Route Segments and Route Options will be assessed and compared.



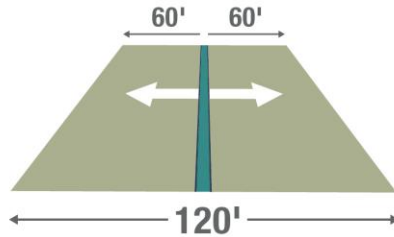
ANALYSIS

Evaluation was done with GIS
using publicly available data
*primarily sourced from the City of
Bainbridge Island and Kitsap County*



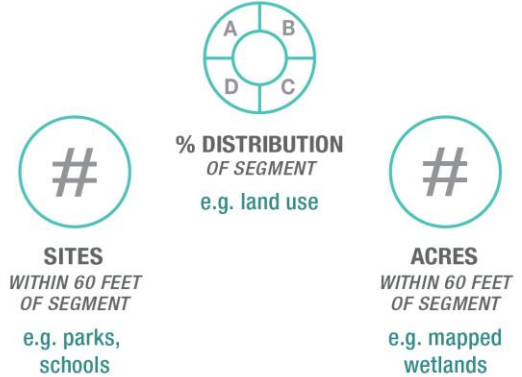
The analysis considered
a 120-foot wide area
measured 60 feet on either
side of the line Segment

*The analysis area provides a
representation of criteria present
for initial screening purposes, but is
not an estimate of potential impacts.*



The output of the
analysis are metrics

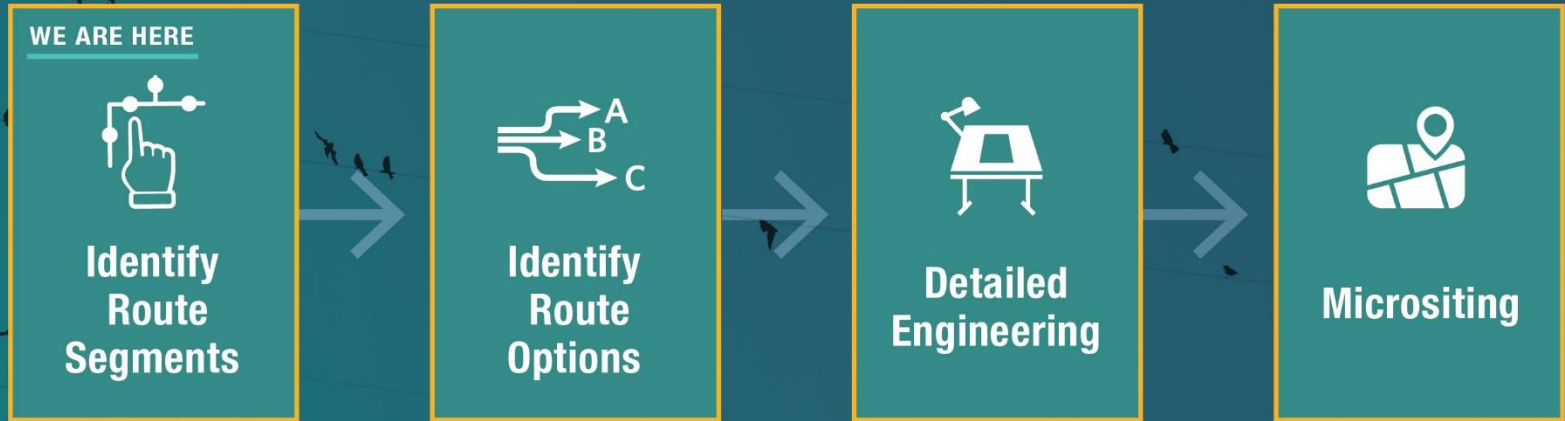
*metrics come in a few
typical forms such as:*



*We are still in the preliminary stages of analysis.
This information does not reflect impacts associated with the project.*

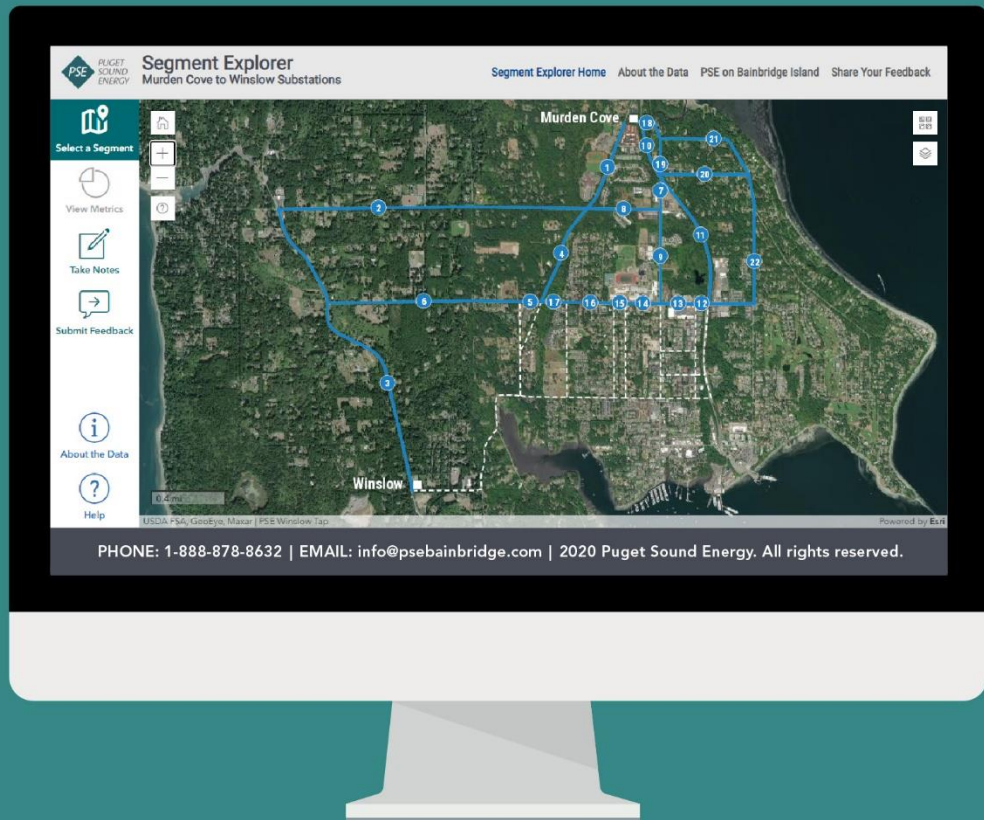
METRICS

CRITERIA ARE MEASURED WITH METRICS.
METRICS CHANGE AS THE PROJECT DEVELOPS.



SEGMENT EXPLORER

Now let's take a look at the
comment mapping tool...



****Breakout Groups Underway****



Observers may email public comments to:
info@psebainbridge.com or leave a voicemail at
1-888-878-8632

We will reconvene in the main meeting room at
6:35p.m. for breakout group reports.

See you in a few minutes!

Report-out by breakout groups

Brief recap of discussion themes

Next steps

- Virtual community workshop – November 2020
- CSB Meeting #5: Early 2021 (date TBD)
- *Remember:* Past meeting materials and resources are available at psebainbridge.participate.online

Adjourn



Thank you!