

Welcome!

Improving reliability

“Missing Link” transmission line public workshop



January 21, 2021

We'll begin at 5pm—all participants will be muted, with videos off.
Technical difficulties? Please call or text Faiza



Welcome Bainbridge Island!

Safety moment – *Strolls for Well-Being*



Strolls at Home from Bloedel Reserve

bloedelreserve.org/strolls-at-home

Zoom Controls Review

The image shows a screenshot of the Zoom interface with several controls highlighted by red boxes and annotated with text and arrows. The background is a solid black rectangle.

- Audio/video off:** A white text label with a red arrow pointing down to the **Unmute** and **Stop Video** buttons, which are highlighted with a red box.
- Update your Zoom name if needed:** A white text label with a red arrow pointing to the **More >** button in the top right corner, which is highlighted with a red box.
- Raise your hand to speak:** A white text label with a red arrow pointing to the **Raise Hand** button in the bottom right corner, which is highlighted with a red box.

The Zoom controls bar at the bottom includes the following elements from left to right:

- Unmute** and **Stop Video** buttons (highlighted with a red box).
- Participants** button (highlighted with a red box).
- Chat** button (highlighted with a red box).
- Share Screen** button.
- Reactions** button.
- End** button.

The top right corner shows the **Participants (1)** list with the name **Shivam ... (Host, me)**, a **Mute** button, and a **More >** button (highlighted with a red box).

The bottom right corner shows the **Raise Hand** button (highlighted with a red box) and a row of reaction buttons: **yes** (green checkmark), **no** (red X), **go slower** (double left arrow), **go faster** (double right arrow), and **more** (three dots). Below these is an **Unmute Me** button.

Agenda

Time	Item	Presenter(s)
5:00 p.m.	Opening <ul style="list-style-type: none"> Welcome and safety moment Zoom orientation Agenda overview Meeting agreements/guidelines 	Kierra Phifer, PSE Susan Hayman, Facilitator
5:10 p.m.	Presentation: Project Review and Routing Process <ul style="list-style-type: none"> Review: Bainbridge Island Reliability Project and the Murden Cove – Winslow transmission line Routing process (key terms and routing criteria) Q&A 	Andy Wappler, PSE Andy Swayne, PSE Kirk Moughamer, HDR
5:55 p.m.	Screen Break	
6:00 p.m.	Route Segments: Discussion groups	Facilitated Breakout Groups
7:20 p.m.	Next steps/Wrap-up <ul style="list-style-type: none"> Reflections on breakout groups Online engagement site Additional ways to comment Closing remarks 	Andy Wappler, PSE Kierra Phifer, PSE
7:30 p.m.	Adjourn	

For today

Faiza Hassan
is our meeting host.

Please text/call
Faiza if you have
technical difficulties.

- Large group: Muted with video off
- Breakout group: Muted with video on
- To ask a question during the Q&A: Use the chat box or raise your hand and wait for the facilitator to call on you
- Meeting conduct:
 - Listen to and appreciate the diversity of views and opinions
 - Actively participate, while allowing opportunities for others
 - Behave constructively and courteously
 - Respect the role of the facilitator to guide the group process.

Project Review and Routing Process

Andy Wappler and Andy Swayne, PSE

Kirk Moughamer, HDR

“Missing Link” transmission line need



Findings:

- Poor transmission reliability
- Aging transmission infrastructure
- Growth: ferry electrification and increased demand for power

PSE's proposed solution



New “missing link”
transmission line
and **rebuild the
aging Winslow Tap**
to improve reliability

**New 3.3 MW battery
energy storage system** to
provide additional capacity

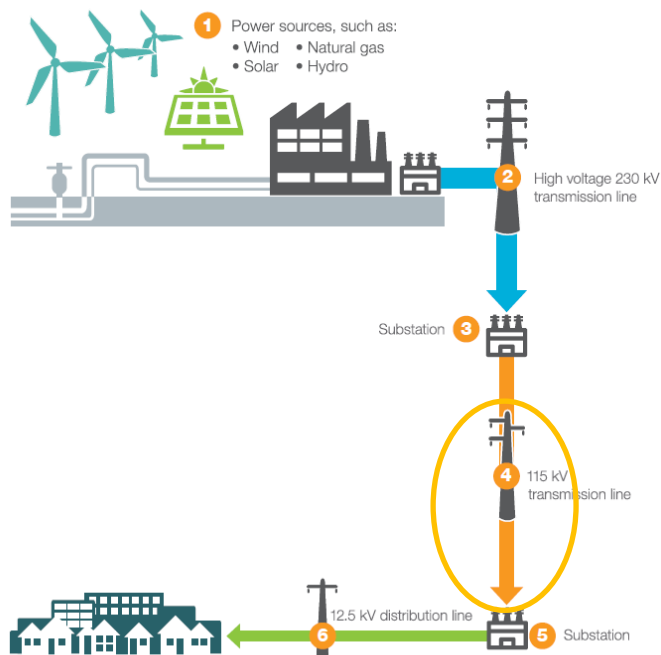
**Targeted conservation
and demand response
tools** to reduce demand

Reliability and resiliency

Capacity

What is transmission?

How power gets to you



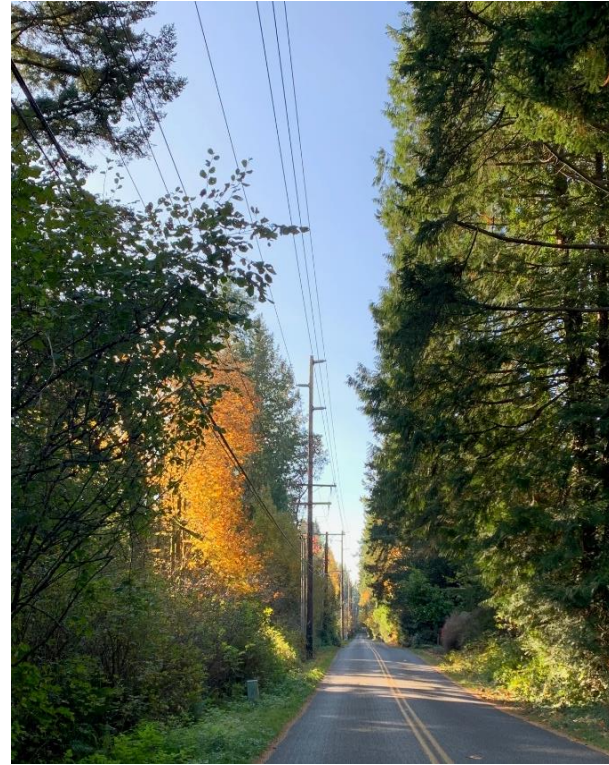
PSE on bainbridge island

Bainbridge Island—PSE Facility Map



NOTE: Map elements are not to scale and locations are approximate.

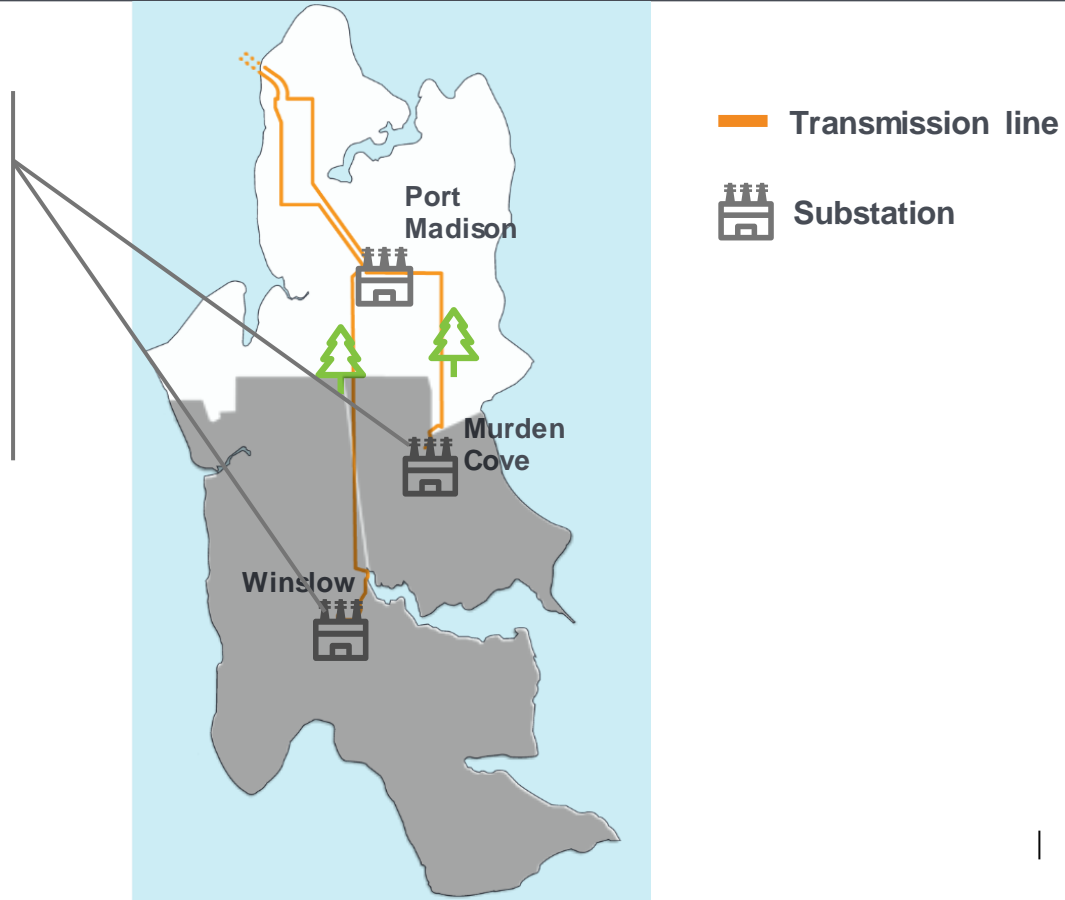
Transmission on the Island



Existing 115kV lines on Bainbridge Island. Not representations of future lines

Why do my lights go out so often?

2/3 of customers at
risk of outage due to
lack of back-up
transmission



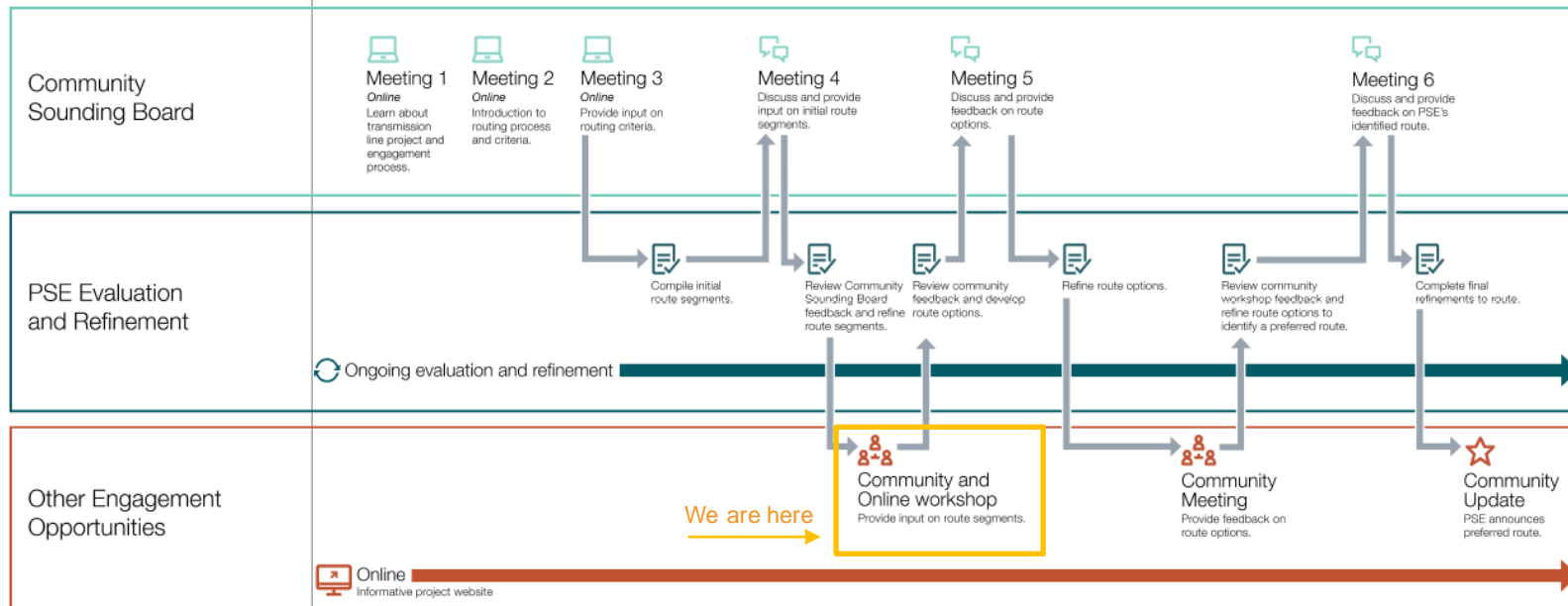
What would help keep the lights on?

New transmission line for improved reliability



Transmission Line Routing Community Engagement Process

2020-2021



NOTE: Schedule and format are subject to change

Updated October 2020

Finding balance during the routing process



KEY TERMS

ROUTE SEGMENT

A discrete section of a potential future transmission line. Route Segments will follow existing road rights-of-way and generally travel in the direction of the designated terminal points.

ROUTE OPTION

A pathway between two identified terminal points that links together Route Segments.

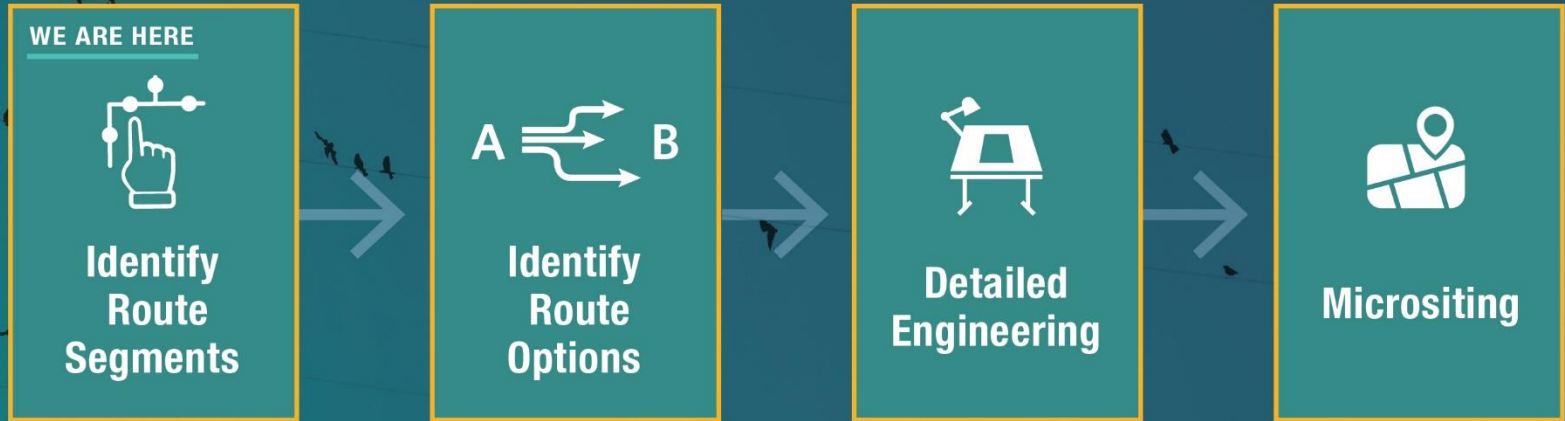
CRITERIA

A set of factors by which Route Segments and Route Options will be assessed and compared.



METRICS

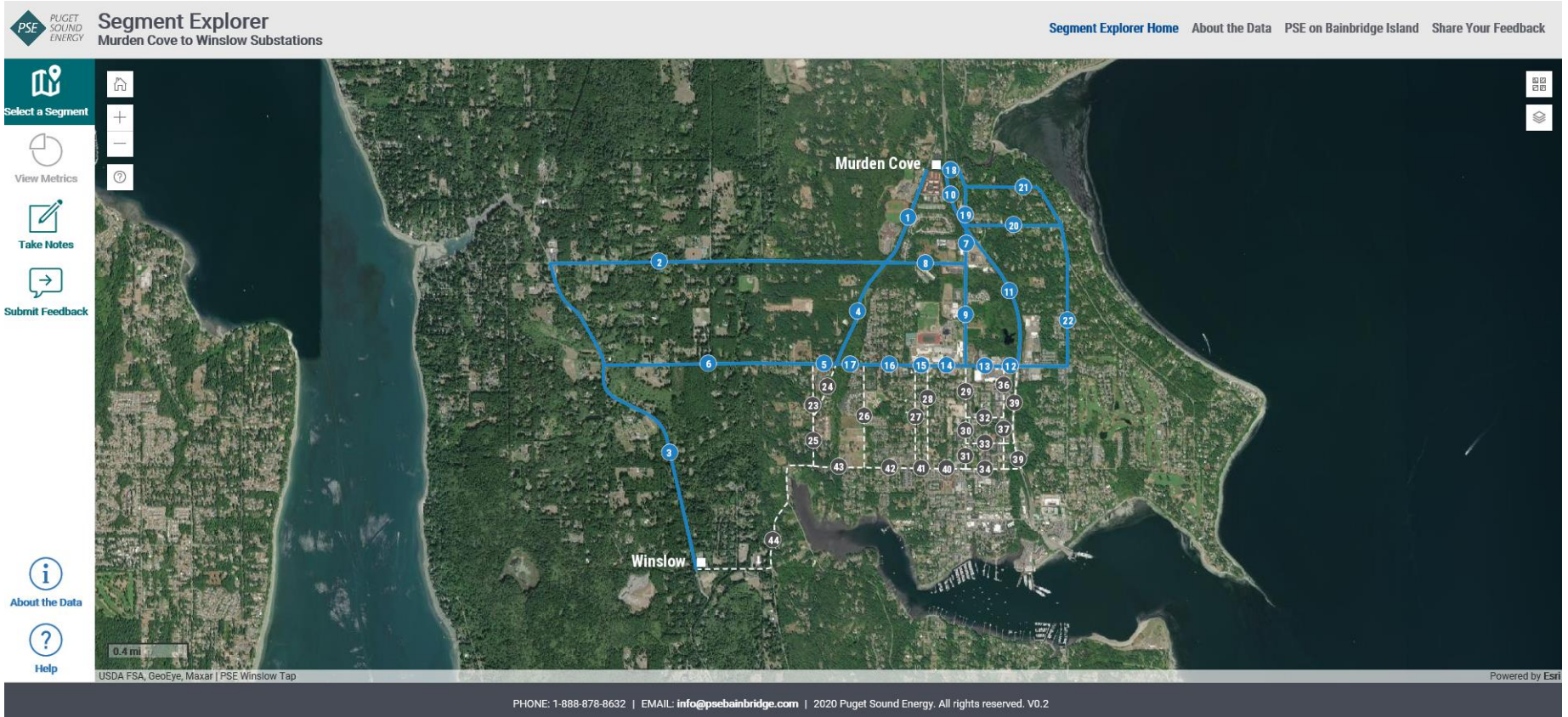
CRITERIA ARE MEASURED WITH METRICS.
METRICS CHANGE AS THE PROJECT DEVELOPS.



Study area



Route Segments



Questions?

Intro to Breakout Groups

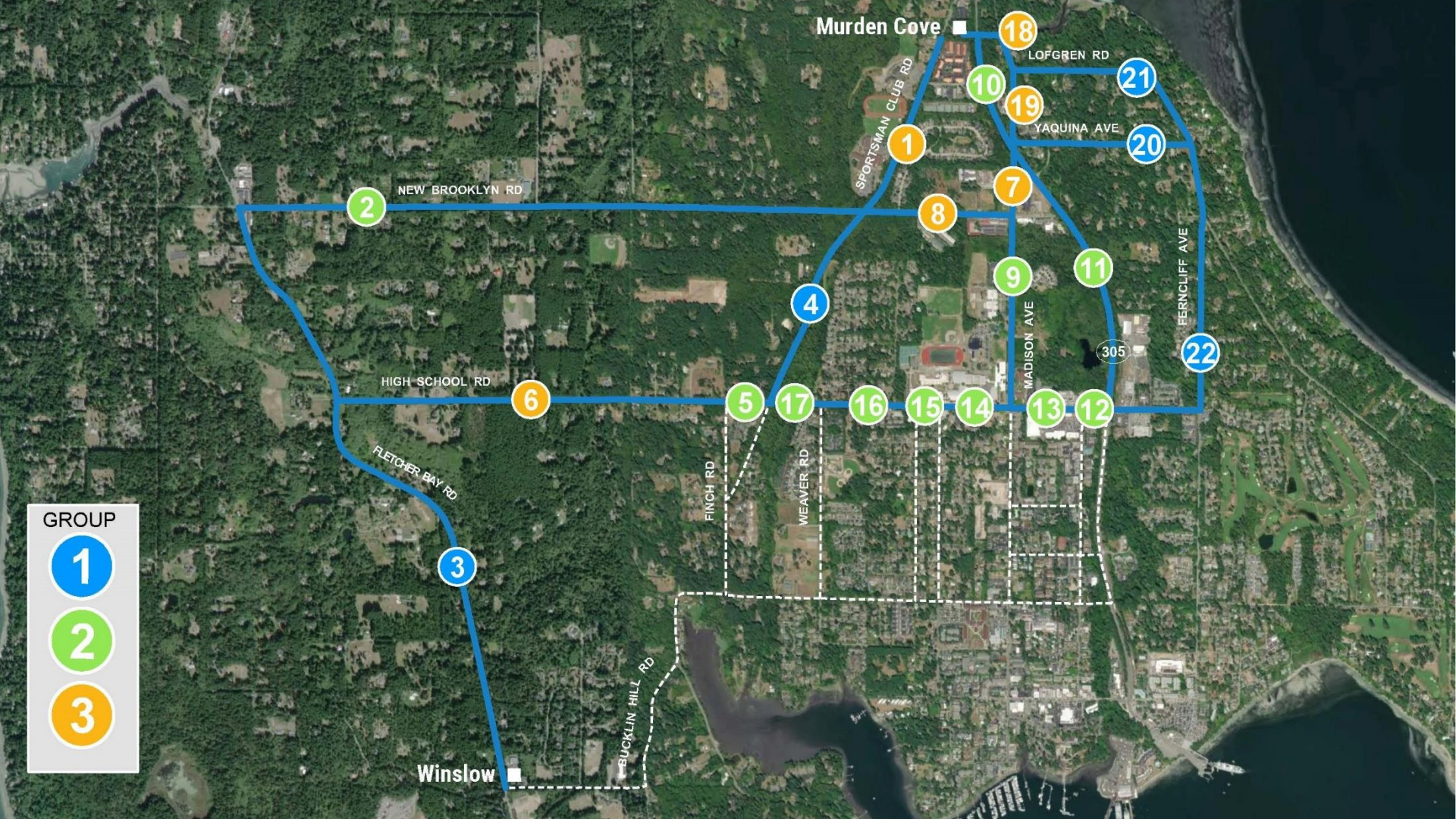
Susan Hayman

GROUP

1

2

3



Break

You'll be moved into your breakout group during the break

Breakout groups underway

You may also email public comments to:

info@psebainbridge.com or leave a voicemail at [1-888-878-8632](tel:1-888-878-8632)

We will reconvene in the main meeting room at 7:20 p.m. for reflections on conversations.

Next Steps/Wrap-up

Andy Wappler and Kierra Phifer, PSE

Reflections

Next steps

- *Reminder:* visit psebainbridge.participate.online to visit our Segment Explorer tool and give feedback
 - You can also give comment by emailing info@psebainbridge.com or leaving a voicemail at 1-888-878-8632
- Community Sounding Board Meeting #5: Spring 2021 (date TBD)
- Next community workshop: Summer 2021 (date TBD)

For more information



Segment Explorer tool available at **psebainbridge.participate.online**



Need and solution studies available at **pse.com/bainbridge**



Email us at **info@psebainbridge.com**



Leave a message at **1-888-878-8632**



Subscribe to our email newsletter at **pse.com/bainbridge**