

# PSE on bainbridge island

---

## Improving reliability

“Missing link” transmission line public workshop

May 3, 2021



We'll begin at 5 p.m. — all participants will be muted.  
Technical difficulties? Please call or text Faiza Hassan, 206.412.2484



# Welcome Bainbridge Island!

# Safety moment – baby animal safety

---



## Safety moment – baby animal safety

---

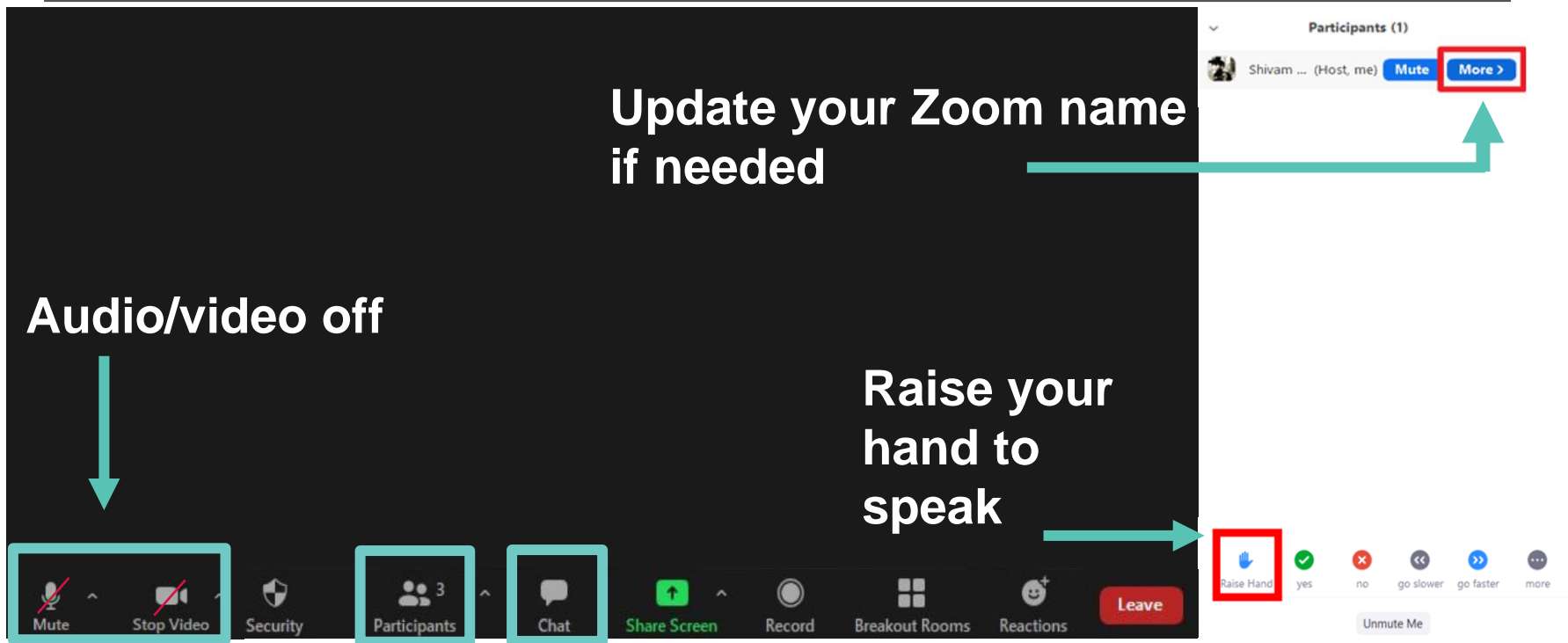


# Zoom controls

**Update your Zoom name if needed**

**Audio/video off**

**Raise your hand to speak**



The image shows a screenshot of the Zoom interface with several controls highlighted by red boxes and teal arrows. A teal arrow points from the text 'Update your Zoom name if needed' to the 'More >' button in the top right corner of the participants list. Another teal arrow points from the text 'Audio/video off' to the 'Mute' and 'Stop Video' buttons in the bottom left corner. A third teal arrow points from the text 'Raise your hand to speak' to the 'Raise Hand' button in the bottom right corner. The participants list shows one participant, Shivam ... (Host, me), with 'Mute' and 'More >' buttons. The bottom toolbar includes buttons for 'Mute', 'Stop Video', 'Security', 'Participants' (with a count of 3), 'Chat', 'Share Screen', 'Record', 'Breakout Rooms', 'Reactions', and a red 'Leave' button. Below the toolbar, there are buttons for 'Raise Hand', 'yes', 'no', 'go slower', 'go faster', and 'more'. A 'Unmute Me' button is also visible.

# Meeting agenda

Time	Item	Presenter(s)
5:00 p.m.	Opening <ul style="list-style-type: none"><li>Welcome and safety moment</li><li>Zoom orientation</li><li>Agenda overview</li><li>Meeting agreements/guidelines</li></ul>	Karen Brubeck, PSE Skip Johnson, Facilitator
5:15 p.m.	Presentation: Project Review and Routing Process <ul style="list-style-type: none"><li>Review: Bainbridge Island Reliability Project and the Murden Cove – Winslow transmission line<ul style="list-style-type: none"><li>Project Q&amp;A</li></ul></li><li>Routing process and route options<ul style="list-style-type: none"><li>Routing Q&amp;A</li></ul></li></ul>	Andy Swayne, PSE Kirk Moughamer, HDR
6:10 p.m.	Next Steps <ul style="list-style-type: none"><li>Online engagement site and ways to comment</li><li>Next steps</li><li>Closing remarks</li><li>Breakout Room details</li></ul>	Karen Brubeck, PSE
6:20 p.m.	10-minute Screen Break	
6:30 p.m.	Route Options: Discussion Groups <ul style="list-style-type: none"><li>Small group conversations in Zoom breakout rooms to discuss route options further, gather feedback and answer questions</li></ul>	Facilitated Breakout Rooms
7:30 p.m.	Adjourn	



# For today

---

Faiza Hassan  
is our meeting host.

Please text/call  
Faiza if you have  
technical difficulties:  
**206-412-2484**

- Large group: Muted with video off
- Breakout group: Muted with video on
- To ask a question during the Q&A: Use the chat box or raise your hand and wait for the facilitator to call on you
- Meeting conduct:
  - Listen to and appreciate the diversity of views and opinions
  - Actively participate in the group
  - Behave constructively and courteously towards all participants
  - Respect the role of the facilitator to guide the group process

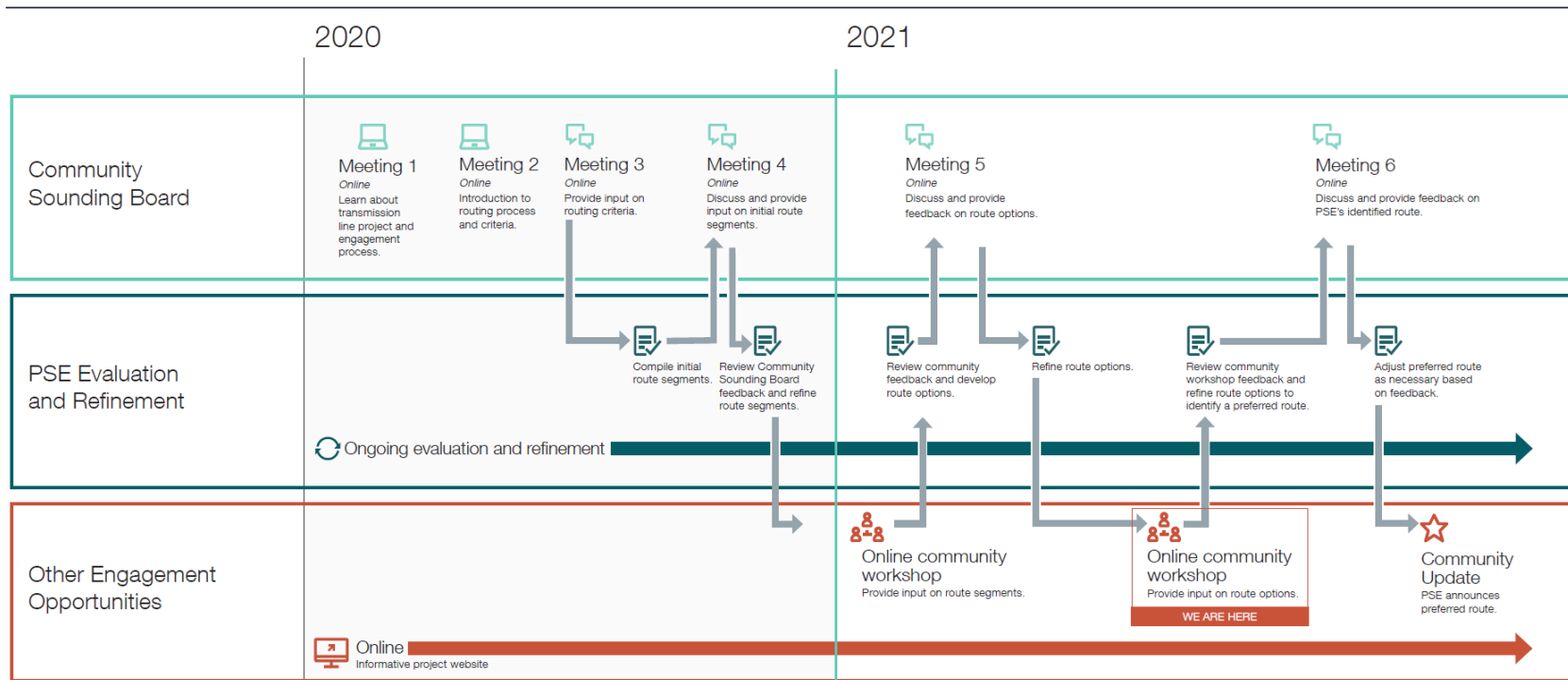
# Project review and feedback from the community

---

Andy Swayne, PSE



# Brief recap: Community engagement process



NOTE: Schedule and format are subject to change

# “Missing Link” transmission line need

---

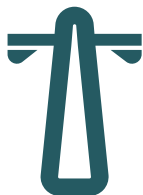


## Findings:

- Poor transmission reliability
- Aging transmission infrastructure
- Growth: ferry electrification and increased demand for power

# PSE's proposed solution

---



**New “missing link”  
transmission line and  
rebuild the aging Winslow  
Tap to improve reliability**

**New 3.3 MW battery  
energy storage  
system to provide  
additional capacity**

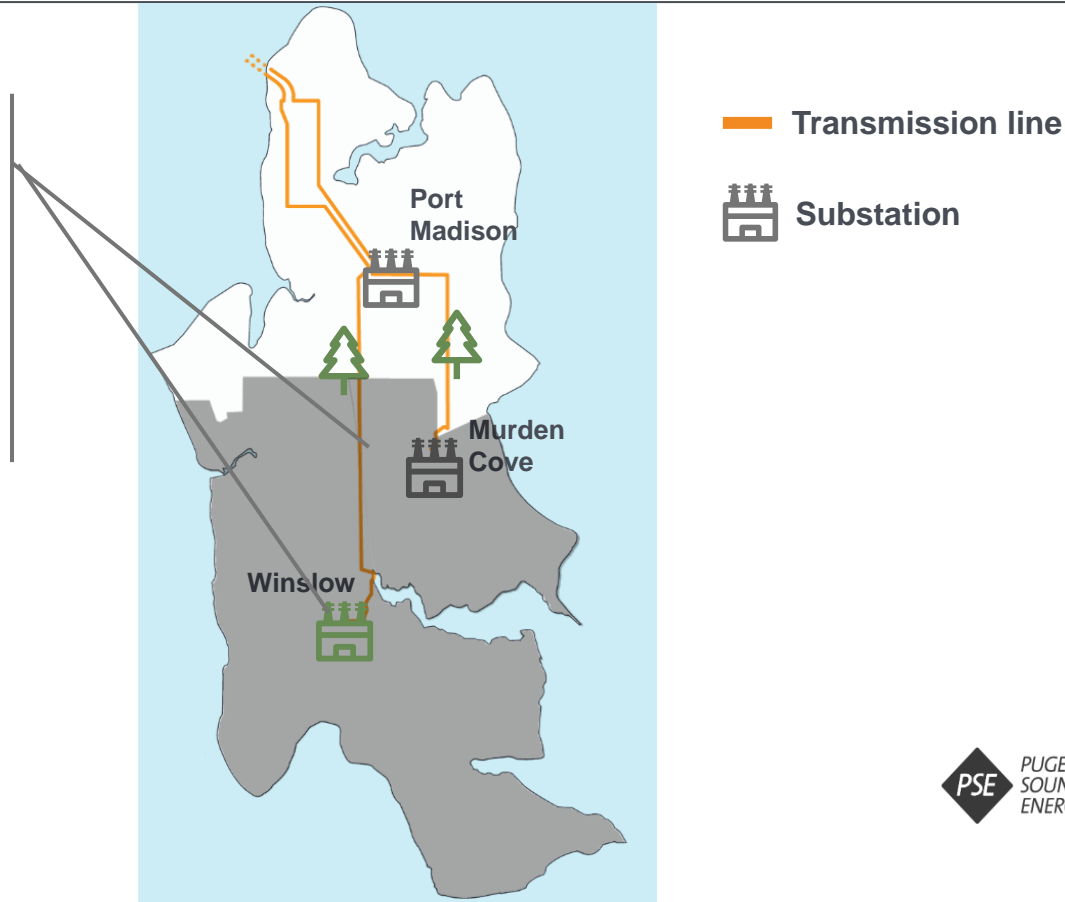
**Targeted conservation  
and demand response  
tools to reduce  
demand**

Reliability and resiliency

Capacity

# Why do my lights go out so often?

2/3 of customers  
at risk of outage  
due to lack of  
back-up  
transmission



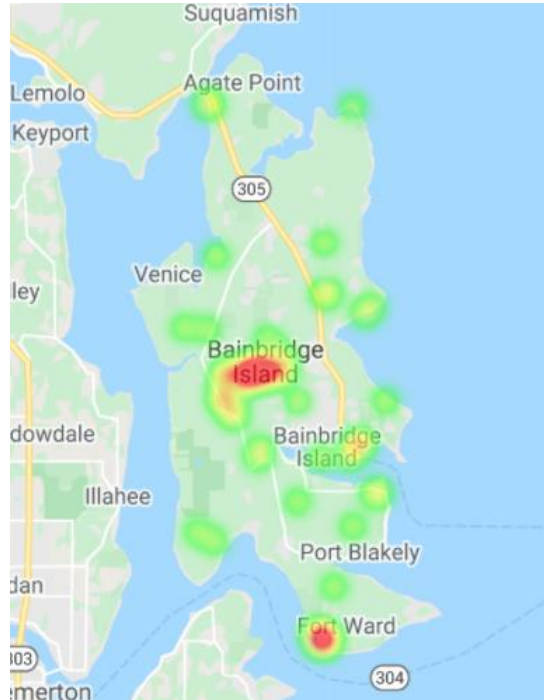
# What would keep the lights on?

New transmission line for improved reliability



# Public feedback on route segments

---



- Online feedback period: Jan. 21 – Feb. 12, 2021
- Total of 92 responses submitted by 88 individuals
- Feedback submitted via Segment Explorer, email, online comment forms, voicemails, and letters

# Public feedback on route segments

---

Comments submitted to PSE generally provided the following themes:



Support for the new transmission line & improving overall reliability



Identify opportunities to create/enhance trails



Take the shortest, most direct route



Concerns for impacts to private property; should not take private property for utility easements



Support both for and against undergrounding; belief that overhead lines are less reliable



Minimize project costs



# Public feedback on route segments

---

Comments submitted to PSE generally provided the following themes (cont.):



Concerns for impacts to natural environment and vegetation management



Prioritize rebuilding Winslow Tap and other maintenance projects



Concerns that transmission line construction will be intrusive and frustrating



System should stay as-is; power outages are OK



Power outages are hard on those with medical challenges



Concerns about routing near youth gathering spaces

# Public feedback on route segments

---

Comments submitted to PSE generally provided the following themes (cont.):

- Some commenters feel that living in a rural area should not mean having unreliable infrastructure.
- Some commenters shared concern about the challenges posed by Category II wetlands along some of the route segments.
- Some commenters expressed that PSE should not cut trees or take property for utility easements to build this transmission line.
- Some commenters suggested that PSE should add batteries to Bainbridge Island to improve reliability.

# Questions?

# Routing process and route options

---

Andy Swayne, PSE

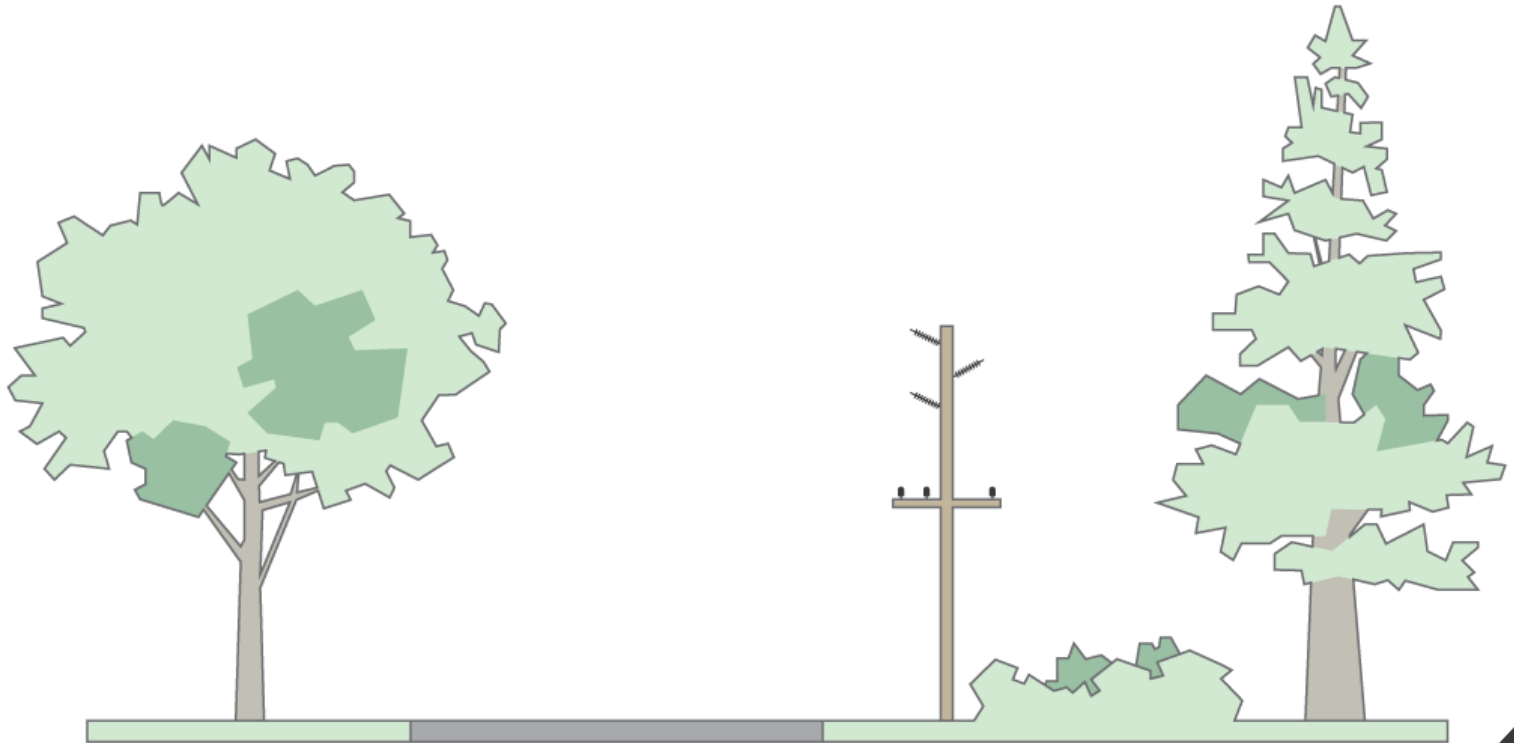
Kirk Moughamer, HDR

# Finding balance in the routing process



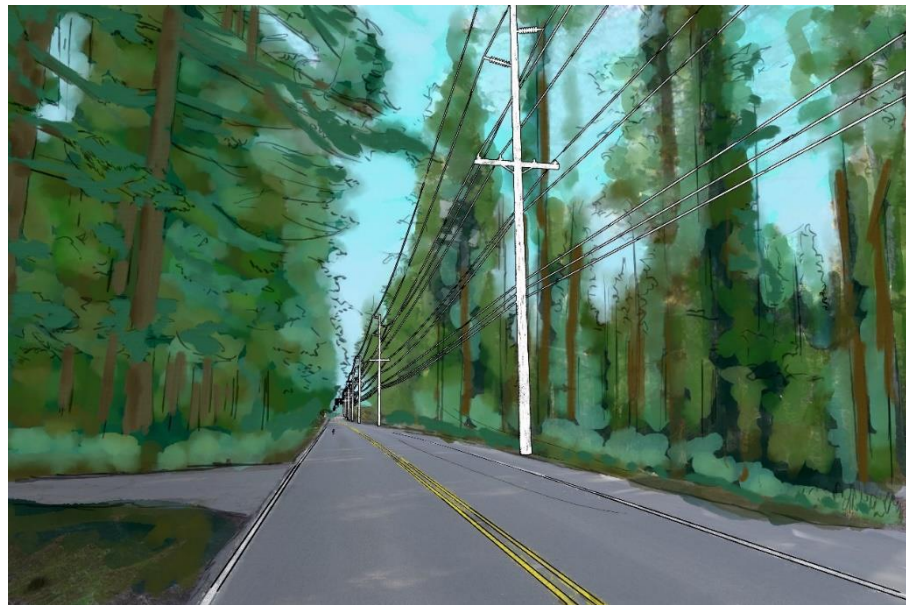
# Transmission corridor

---



# Graphic representation

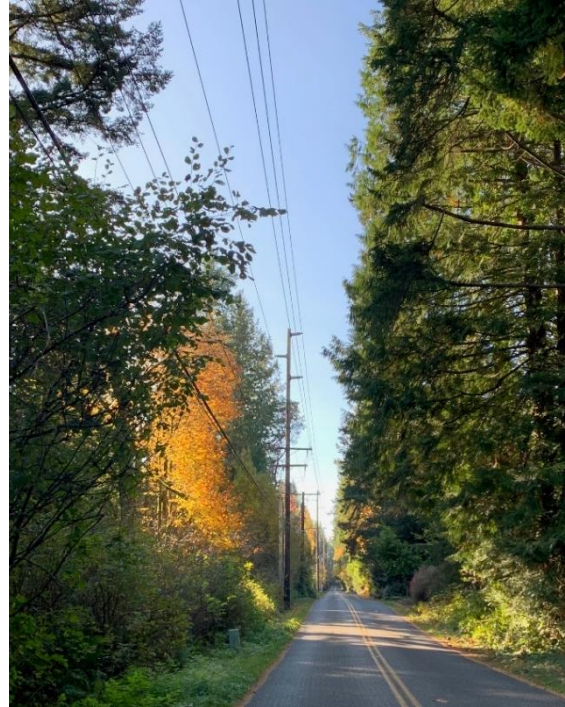
---





# Existing 115kV transmission lines on Bainbridge Island

---



# Existing 115kV transmission lines on Bainbridge Island

---



- **Route segment**

A discrete section of a potential future transmission line. Route Segments will follow existing road rights-of-way and generally travel in the direction of the designated terminal points.

- **Route option**

A pathway between two identified terminal points that links together Route Segments.

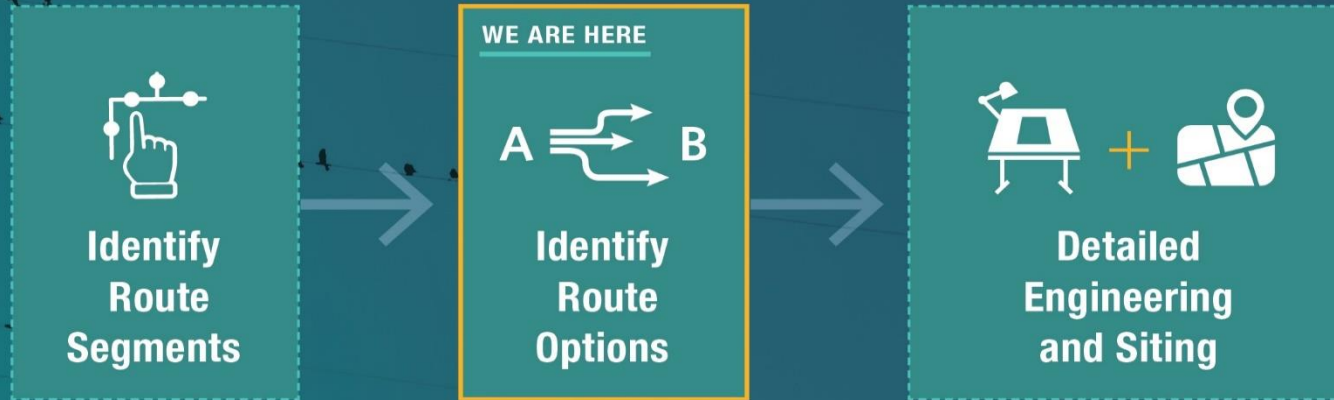
- **Criteria**

A set of factors by which Route Segments and Route Options will be assessed and compared.

# Metric

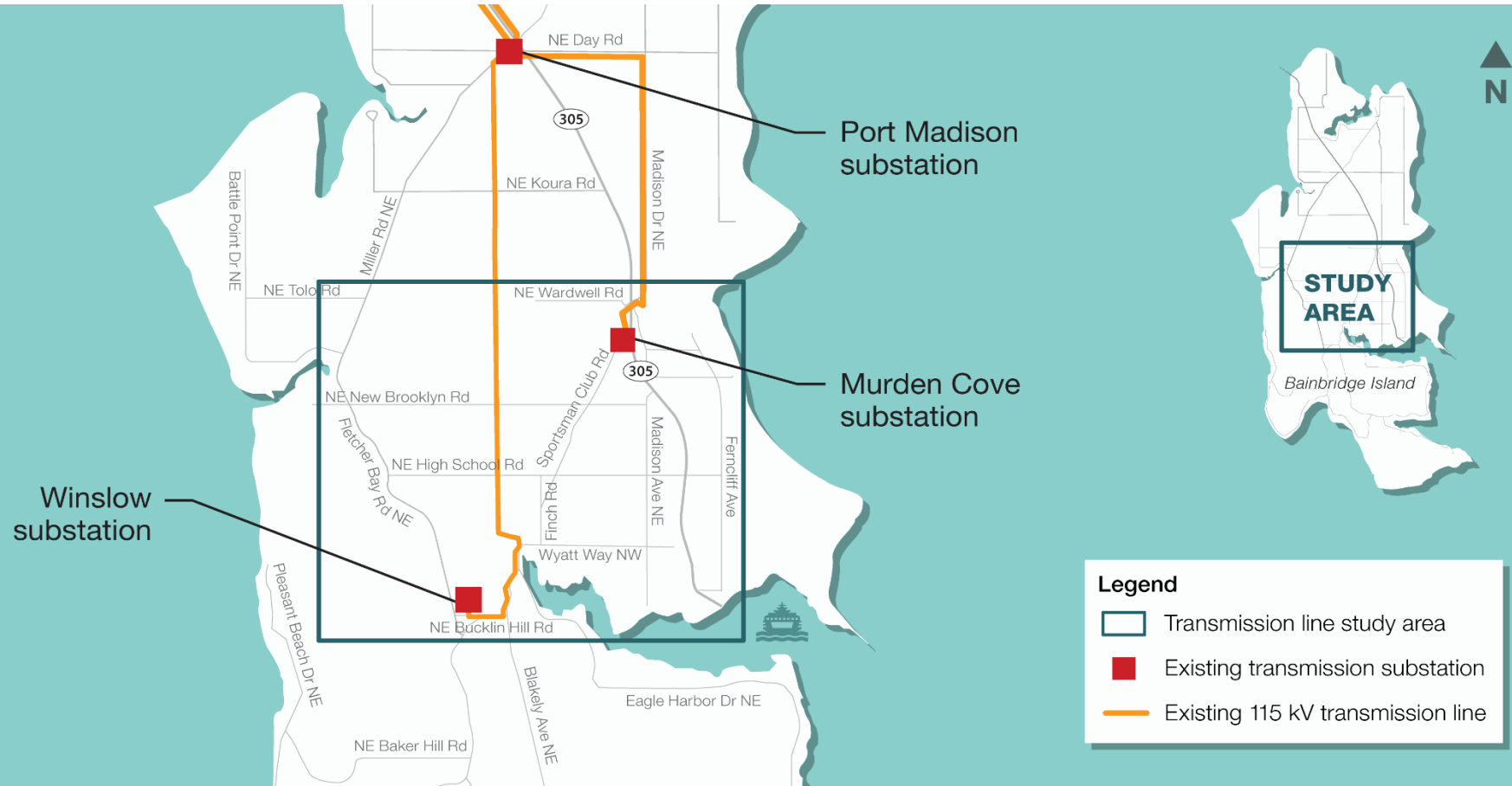
---

- Criteria are measured with metrics. Metrics change as the project develops.

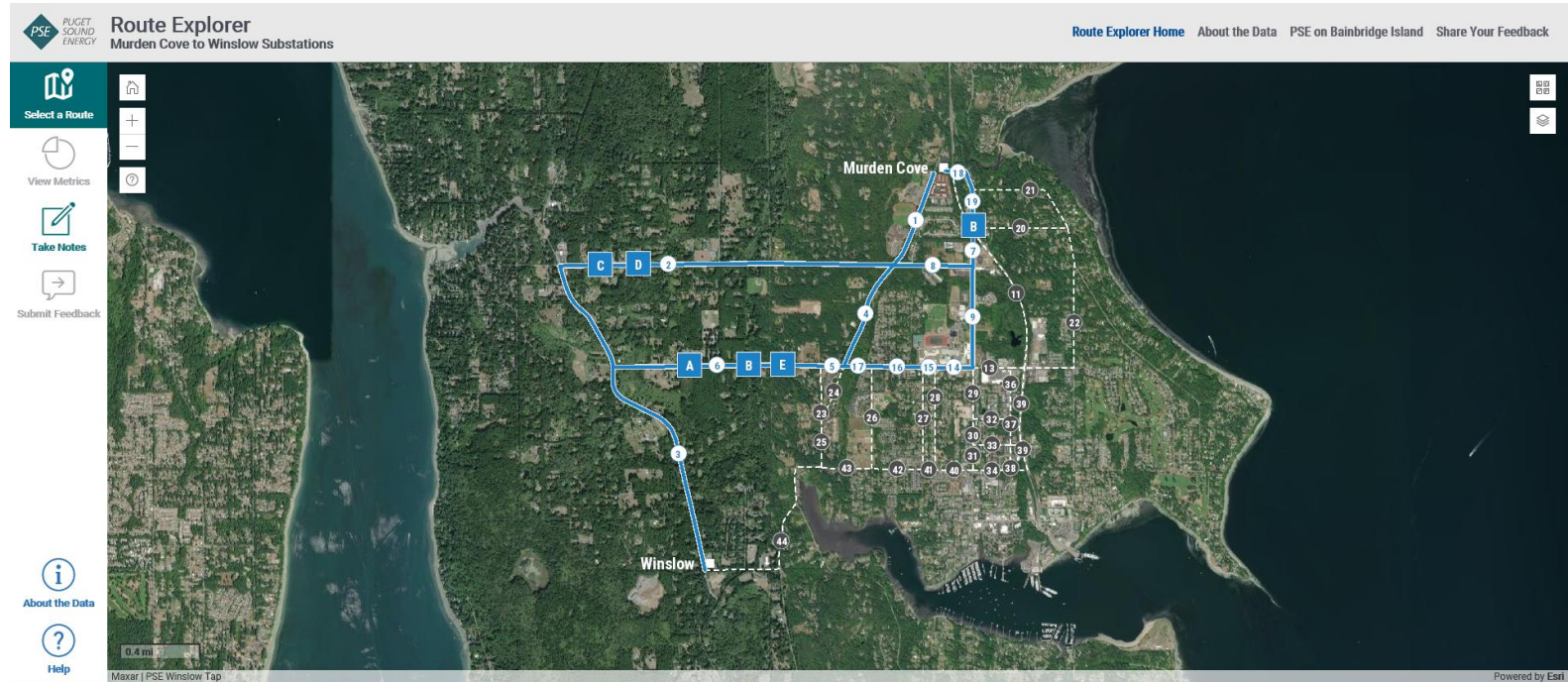




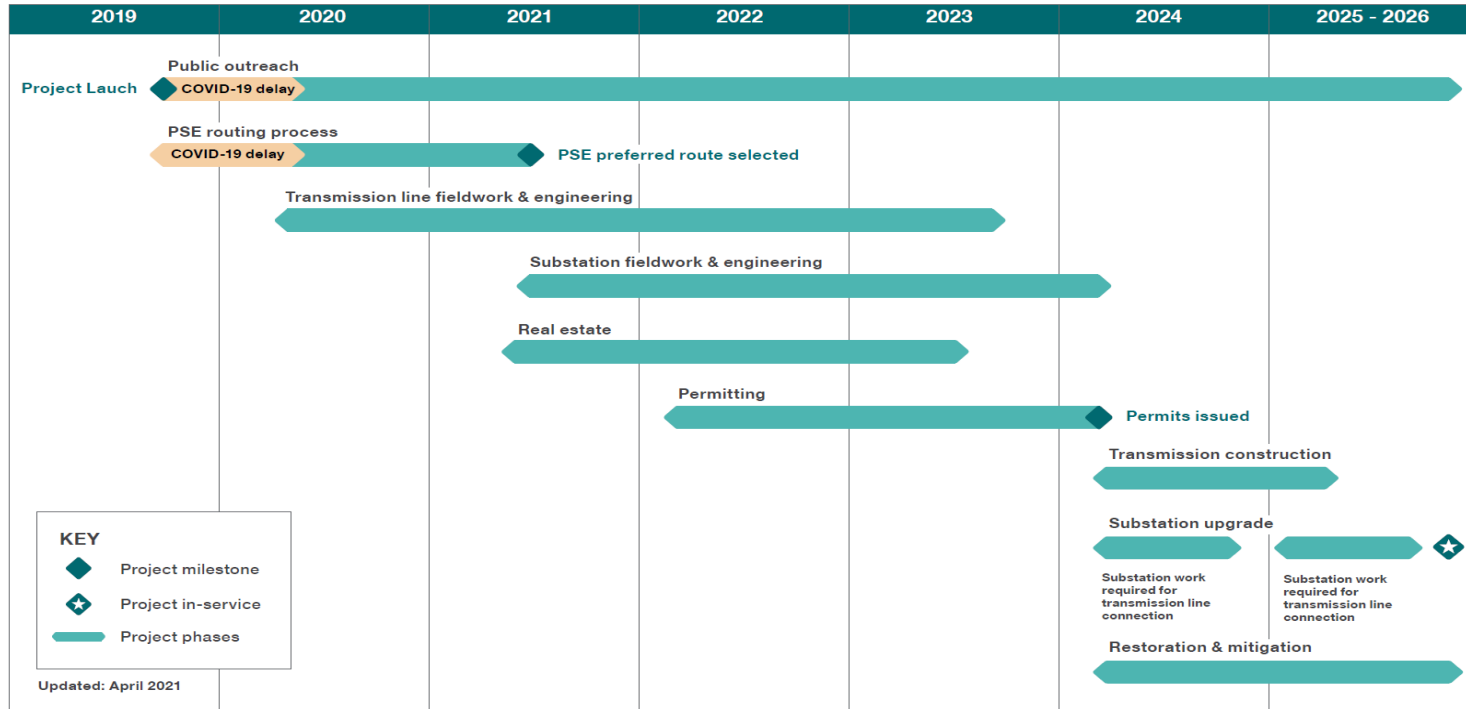
# Study area



# Route options



# Murden Cove - Winslow “Missing Link” Transmission Line Projected Timeline and Milestones



Subject to change. The project timeline depicts PSE’s current anticipated timing of project phases and is dependent on outside agencies’ decisions and construction windows. Delays will push out the project’s completion.



# Questions?

## Next steps and wrap up

---

Karen Brubeck, PSE

## Next steps

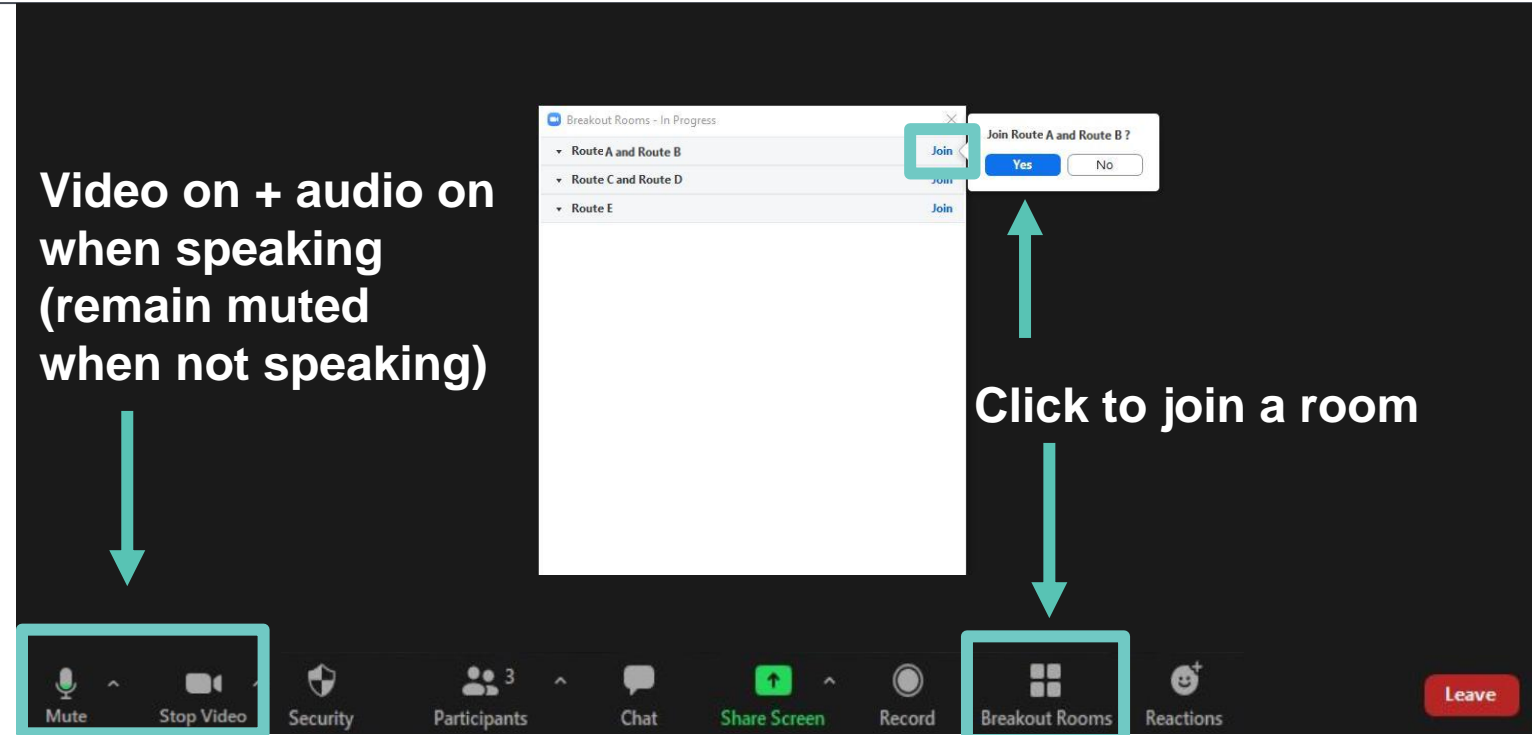
---

- **Reminder:** Visit **psebainbridge.participate.online** to visit our Route Explorer tool and give feedback
  - You can also give comment by emailing **info@psebainbridge.com**, leaving a voicemail at 1-888-878-8632, or using the comment form on **psebainbridge.participate.online**.
  - Submit comment by June 2 at 5 p.m. to inform PSE's preferred route selection
- CSB Meeting #6: anticipated Summer 2021
- Preferred route announcement: anticipated Summer 2021

# Zoom controls – Joining breakout rooms for route discussions

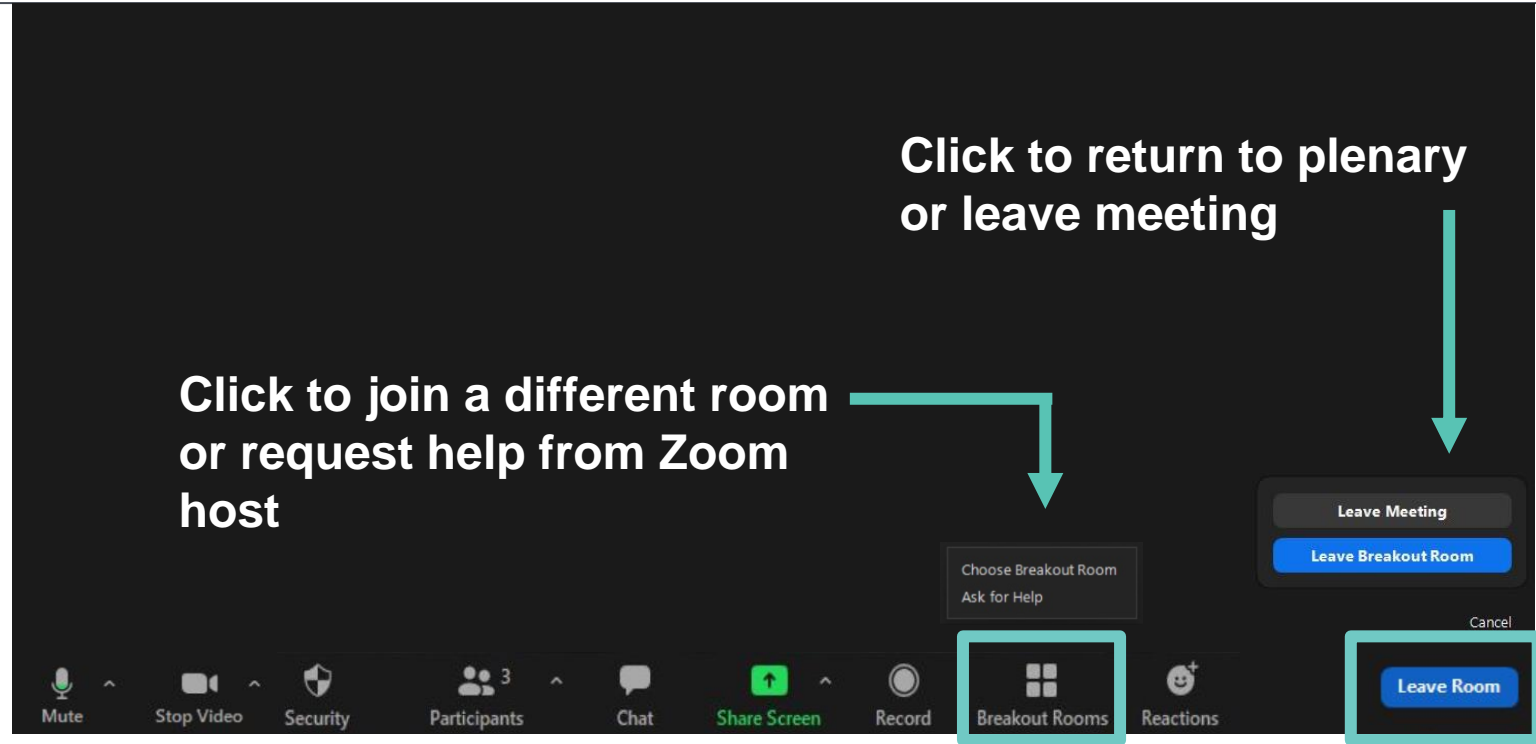
**Video on + audio on  
when speaking  
(remain muted  
when not speaking)**

**Click to join a room**



The screenshot shows the Zoom interface during a breakout session. A window titled 'Breakout Rooms - In Progress' is open, displaying a list of rooms: 'Route A and Route B', 'Route C and Route D', and 'Route E'. Each room has a 'Join' button. A red box highlights the 'Join' button for 'Route A and Route B'. A red arrow points from this button to a dialog box that asks 'Join Route A and Route B?' with 'Yes' and 'No' buttons. Another red arrow points from the 'Breakout Rooms' button in the bottom toolbar to the dialog box. The bottom toolbar contains several icons: 'Mute' (microphone icon), 'Stop Video' (video camera icon), 'Security' (shield icon), 'Participants' (three people icon), 'Chat' (speech bubble icon), 'Share Screen' (green square with an upward arrow), 'Record' (circular arrow icon), 'Breakout Rooms' (four squares icon), 'Reactions' (smiley face icon), and a red 'Leave' button. A red box highlights the 'Mute' and 'Stop Video' buttons. A red arrow points from the text 'Video on + audio on when speaking (remain muted when not speaking)' to this box.

## Zoom controls – Changing or leaving breakout rooms



10-minute screen break

---

After the break we will move into self-selected breakout groups

# Route option discussions underway in breakout rooms

You may join any breakout room at any time – click the “Breakout Rooms” button at the bottom of your screen.

If you need help getting into a room, please send a chat to our Zoom host, Faiza noting which room you’d like to be placed into.

## Breakout Rooms

### 1: Routes **A** and **B**

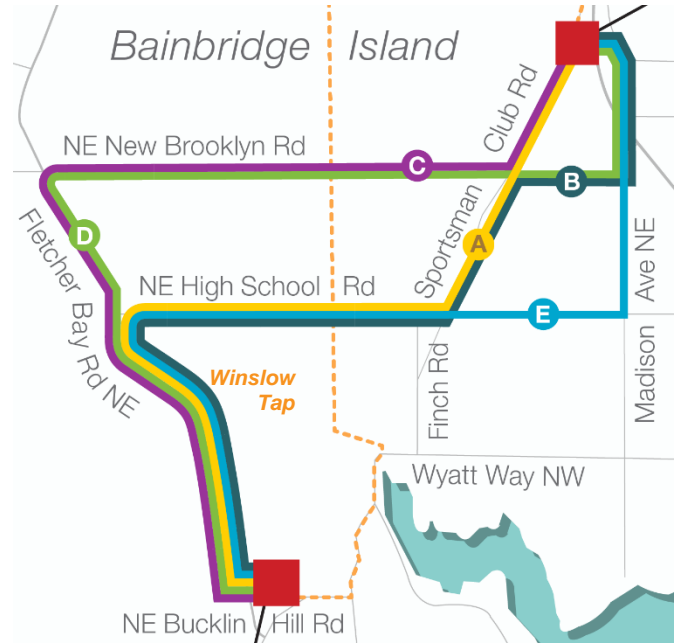
*NE High School Rd*

### 2: Routes **C** and **D**

*NE New Brooklyn Rd*

### 3: Route **E**

*Madison Ave E & NE High School Rd*



You may also email public comments to [info@psebainbridge.com](mailto:info@psebainbridge.com), leave a voicemail at 1-888-878-8632, or use our online workshop comment form at [psebainbridge.participate.online](https://psebainbridge.participate.online).