

PSE on bainbridge island **Community Sounding Board Meeting #6**

Selected Route and Process

December 2, 2021



**PUGET
SOUND
ENERGY**

A photograph of several wind turbines silhouetted against a sunset sky with orange and yellow clouds. The turbines are positioned across a dark landscape, with one in the foreground on the right and others receding into the distance. A white vertical line separates the 'Thank you!' text from the 'Community Sounding Board Members' text.

Thank you!

**Community Sounding
Board Members**

Safety moment: Driving in wet weather



Photo courtesy of KOMO News

- ◆ Slow down and turn on your headlights
- ◆ Use your windshield wipers
- ◆ Maintain a safe distance between cars
- ◆ Avoid heavy braking
- ◆ Watch out for standing water
- ◆ Let off the gas when hydroplaning

Welcome Angie Thomson, Facilitator

- ◆ **Karen Brubeck** – Senior Community Engagement Representative, PSE

Meeting agenda

Time	Item	Presenter(s)
5:00 p.m.	Opening <ul style="list-style-type: none"> • Thank you • Safety moment • Introductions • Meeting overview 	Karen Brubeck, PSE Angie Thomson, Facilitator
5:10 p.m.	Presentation: <ul style="list-style-type: none"> • Feedback from both workshops and feedback period • Provide update on challenging segments and CSB-suggested options to explore. • Present selected route 	Karen Brubeck, PSE Andy Swayne, PSE Kirk Moughamer, HDR
5:45 p.m.	Break	
5:55 p.m.	Group discussion: What might we consider as we advance the design of the route? During construction? What feedback do you have on the CSB process?	Angie Thomson, Facilitator
6:25 p.m.	Wrap up, next steps	Karen Brubeck, PSE
6:30 p.m.	Public comment	Angie Thomson, Facilitator
6:45 p.m.	Adjourn	

Technical difficulties?

Text or call Faiza
at 206-412-2484

- ◆ Observers are in listen-only mode, there will be an opportunity to provide public comments later in the meeting
- ◆ CSB members:
 - ◆ Listen to and appreciate the diversity of views and opinions
 - ◆ Actively participate in the group
 - ◆ Behave constructively and courteously towards all participants
 - ◆ Respect the role of the facilitator to guide the group process

Zoom controls

Update your Zoom name if needed

Audio/video off

Raise your hand to speak

The image shows a screenshot of the Zoom interface with several controls highlighted by red boxes and annotated with text and arrows. The background is a solid black rectangle. In the top right corner, there is a 'Participants (1)' list showing 'Shivam ... (Host, me)' with 'Mute' and 'More >' buttons; the 'More >' button is highlighted with a red box, and a teal arrow points from the text 'Update your Zoom name if needed' to it. On the left side of the black rectangle, the text 'Audio/video off' is displayed with a teal arrow pointing down to a red box containing the 'Unmute' and 'Stop Video' buttons. On the right side, the text 'Raise your hand to speak' is displayed with a teal arrow pointing to a red box containing the 'Raise Hand' button. The bottom of the image shows the Zoom toolbar with buttons for 'Participants', 'Chat', 'Share Screen', 'Reactions', and 'End'. To the right of the toolbar is a 'Raise Hand' section with a 'Raise Hand' button (highlighted with a red box), a 'yes' button, a 'no' button, 'go slower' and 'go faster' buttons, and a 'more' button. Below this section is an 'Unmute Me' button.

Community feedback and route selection

- ◆ **Karen Brubeck** – Senior Community Engagement Representative, PSE
- ◆ **Andy Swayne** – Municipal Liaison Manager, PSE
- ◆ **Kirk Moughamer** – Routing Consultant, HDR

Themes from the community's feedback



Underground the line



Improved reliability is needed now



Minimize impacts to trees, wetlands and habitat



Take the shortest, most direct route



Minimize impacts to residential neighborhoods



Preserve island character



Avoid schools



Minimize visual impacts



Current reliability is adequate



Keep project costs reasonable

CSB Input



Consider an underwater cable through Eagle Harbor



Shared the existence and potential concern around routing near the Fire District's Helipad



Considering adding route segments on Westerly and through the Sakai property



Reroute the existing Winslow Tap transmission line to create new route segments



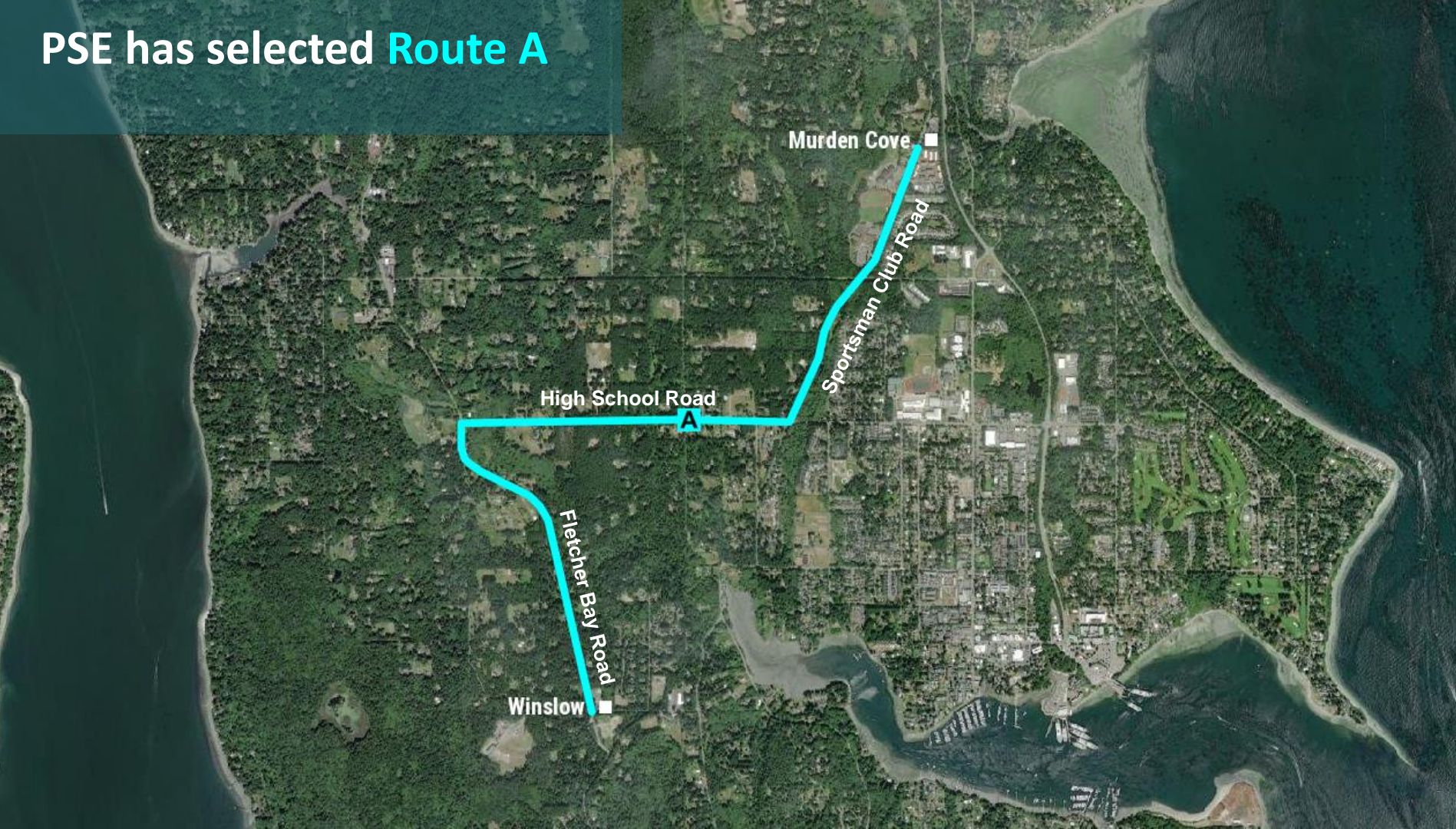
Consider the City's Non-Motorized Plan and how it could interact with the new transmission line

Segment 18 Relocation

- ◆ Routes B, D, and E were re-routed to avoid new residential developments east of SR305.
- ◆ This re-route was specific to the former Segment 18.
- ◆ The revised routes follow Sportsman Club road to NE Business Park Lane, south of Coppertop.



PSE has selected **Route A**



What differentiated Route A?

Using the routing criteria, Route A:

- ◆ Is the **shortest route**
- ◆ **Impacts the fewest parcels**, including residential parcels
- ◆ Follows **public road rights-of-way for the entire length**
- ◆ Contains land uses and zoning that represent **less density**
- ◆ Has a comparatively **lower area of tree canopy**
- ◆ **Has existing overhead distribution lines** along its entire length

Why was Route A Selected?

Route A follows **PSE's existing distribution system** in the **road right-of-way**.

This provides the **best opportunity to minimize impacts** on the following community values:

- ◆ Trees, wetlands, and habitats
- ◆ Private property and residential neighborhoods
- ◆ Schools

Sportsman Club Road



Before



After



Sportsman Club Road



Before



After



High School & Fletcher Bay Road



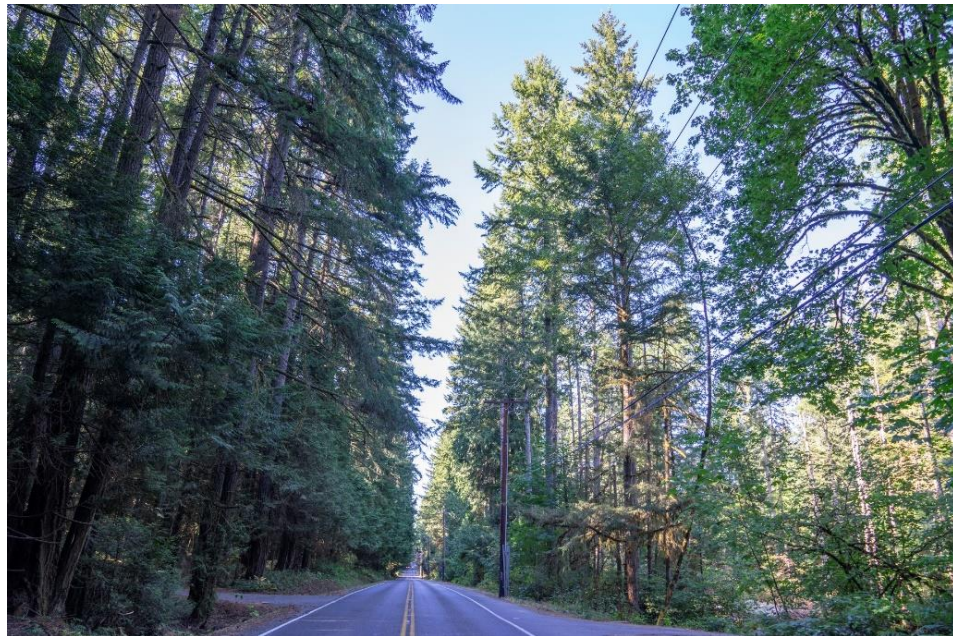
Before



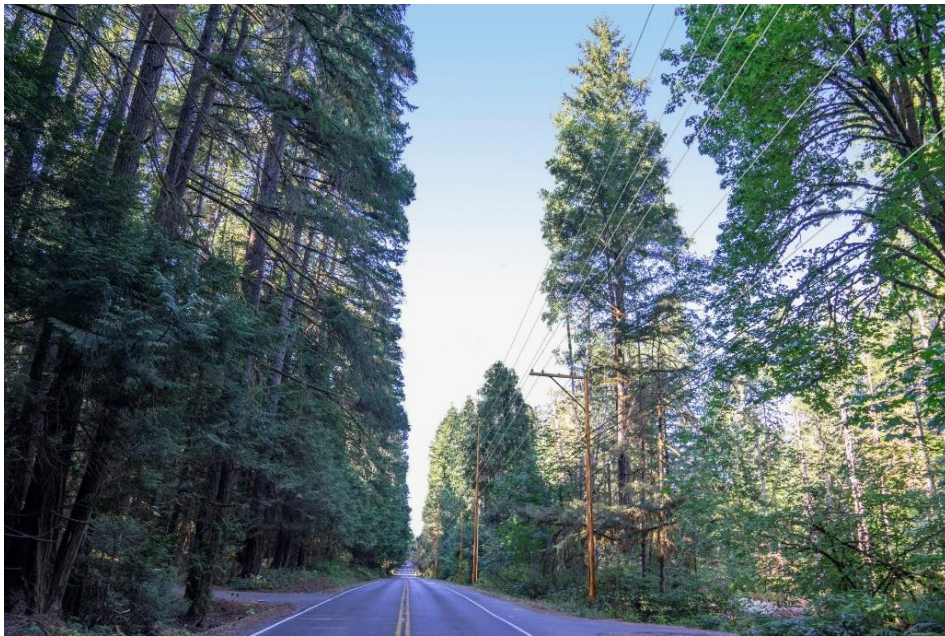
After



Fletcher Bay Road



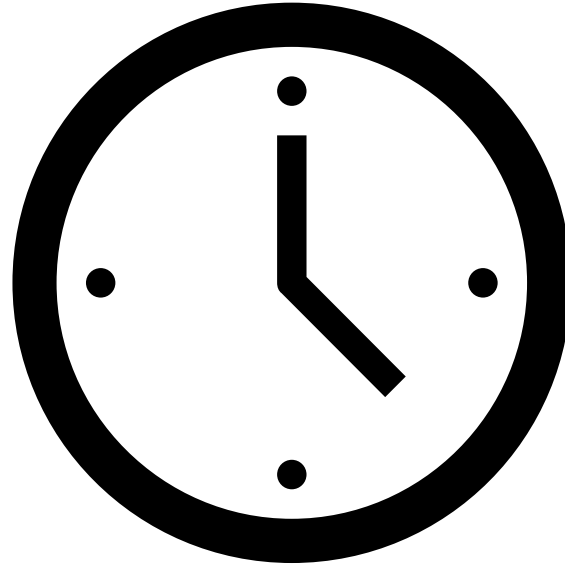
Before



After



10-minute break



Group discussion

- ◆ What might we consider as we advance the design of the route?
- ◆ What might we consider during construction?
- ◆ What feedback do you have on the CSB process?

What's next?

Community

- ◆ We will inform the community of the selected route by mail
- ◆ Information on what's next will be sent to property owners along the route
- ◆ Final Community Sounding Board meeting on Thursday, December 2 at 5 p.m.

Technical work

- ◆ Fieldwork and engineering design beginning soon.
- ◆ Permit process will include public feedback opportunities.
- ◆ We anticipate the new transmission line will be service in 2025 or 2026.

Ways to continue to engage



Past meeting materials and resources are available at **psebainbridge.participate.online**



Email us at **info@psebainbridge.com**

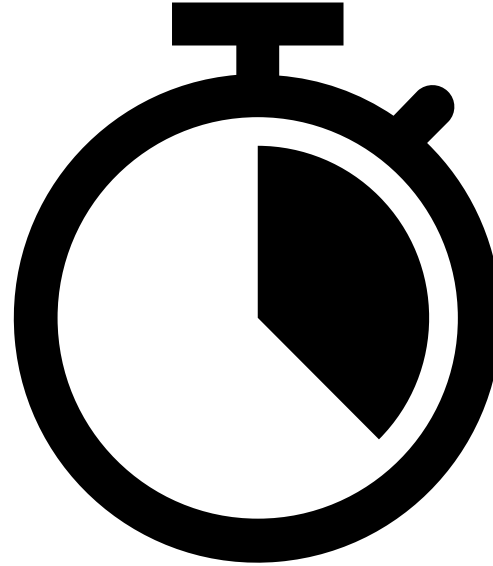


Leave a message at **1-888-878-8632**

Public comment

- ◆ Please “raise your hand” if you would like to make a brief public comment
- ◆ You can contact us at anytime by emailing info@psebainbridge.com, or leaving a voicemail at **1-888-878-8632**, or using the comment form at **psebainbridge.participate.online**

Two-minute timer



Ways to continue to engage



Past meeting materials and resources are available at **psebainbridge.participate.online**



Email us at **info@psebainbridge.com**



Leave a message at **1-888-878-8632**